

XP Unlimited software

Contents

XP Unlimited software.....	1
Installation of XP Unlimited.....	3
Setup program name.....	4
Administrator.....	4
No other users should be active while installing.....	4
Installation Procedure.....	5
Result of the installation.....	10
Startmenu entry.....	11
Additional steps before using XP Unlimited.....	12
Un-install.....	13
No other users should be active while un-installing.....	13
Manual activity after un-install.....	13
Setup Problems.....	14
Example 1.....	14
Example 2.....	15
Final screen in case of Setup problems.....	16
Operations of XP Unlimited.....	17
Maintenance tool.....	18
Advanced Terminal Services Control and Settings.....	20
Monitoring using Taskmanager.....	20
Microsoft Management Console.....	20
Portnumber.....	21
Require membership of the group Remote Desktop Users.....	21
Monitoring using Taskmanager.....	22
Processes.....	22
Performance.....	24
Users.....	25
Difference between disconnect and logoff.....	25
Remote Control.....	26
Advanced settings using Microsoft Management Console.....	28
Terminal Services.....	28
Reboot required.....	29
Users and Groups.....	30
Terminal Services tips from IPConsult.....	33
Performance.....	33
Enforce Removal of Remote Desktop Wallpaper.....	33
Limit maximum color depth.....	33
Remove Disconnect option from Shut Down Dialog.....	33
Security.....	33
Encryption and Security \ Always prompt client for password upon connection.....	33
Sessions \ Time outs.....	33
Users and Groups tips from IPConsult.....	34
Membership of the group Administrators.....	34

Application Control.....	36
Modes.....	36
Administrator and Application Control.....	36
Users, Groups and Applications.....	37
Read, Verify and Save.....	38
Adding Applications.....	39
Selecting Applications.....	39
Delete Applications.....	39
Assigning Applications to an user or group.....	40
Removing Applications from user or group.....	40
Zero Assigned Applications.....	41
One Assigned Application.....	41
Several Assigned Applications.....	42
Sub menus.....	42
Only 1 level of sub menus.....	43
Restrictions.....	43
Apply strict or relaxed Application Control.....	44
Hidden Applications.....	45
Nag screen.....	45
Command line parameters.....	46
Environment variables and Command line Parameters.....	46
Examples how to use Environment variables.....	47
Environment variables and Command line Parameters, Escape character &.....	47
Test tool “How Am I Started”.....	48
Windows Character Map.....	49
Startup Options.....	50
Translate user Dialogs.....	51
No Applications defined for a user Elvis.....	52
Startmenu.....	52
Continue or LogOff:.....	52
Test Tools.....	53
Changelog.....	54
All contents copyrighted by IPConsult BV.....	58

Installation of XP Unlimited

Setup program name

The installation program is called xpunlimitedfull18.exe or xpunlimiteddemo18.exe, depending on which version of XP Unlimited you are installing.

Administrator

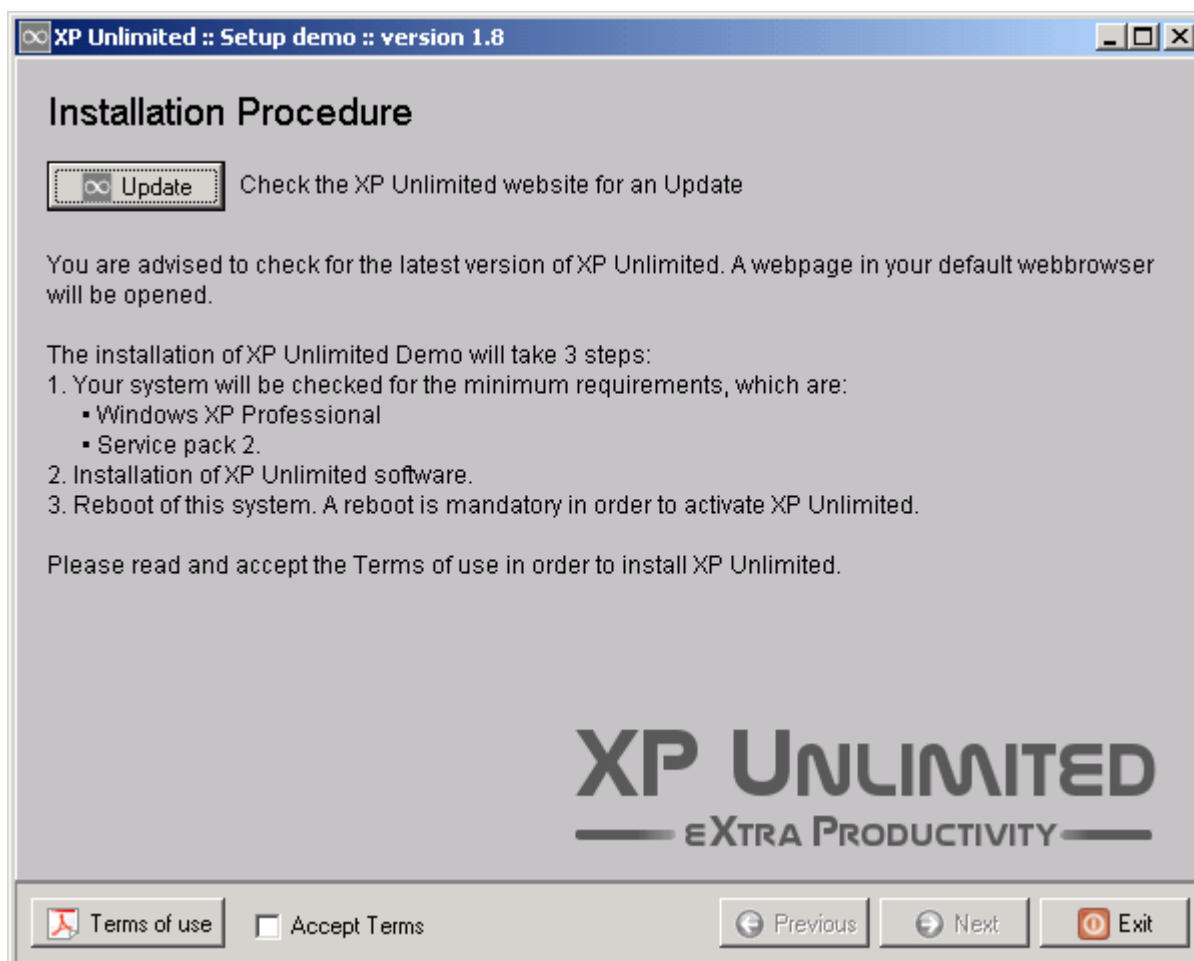
Only an user with Administrator access on the system can install the XP Unlimited software.

No other users should be active while installing

Be sure that nobody is logged in except for the Administrator. In case other users are logged in, systemfiles and settings are locked and can not be updated by XP Unlimited.

Installation Procedure

In the first screen of the “Demo Version” you are requested to read the Terms of use and acknowledge them. The demo version also contains a “check for update” button in the first screen:



The reason behind the Update button is that old versions of XP Unlimited seem to wander around on the Internet. With this Update button you can verify whether or not this version of XP Unlimited is up to date or out of date.

In the first screen of the “Unlimited version” you are requested to enter your license code. You are also requested to read the terms of use and acknowledge them.

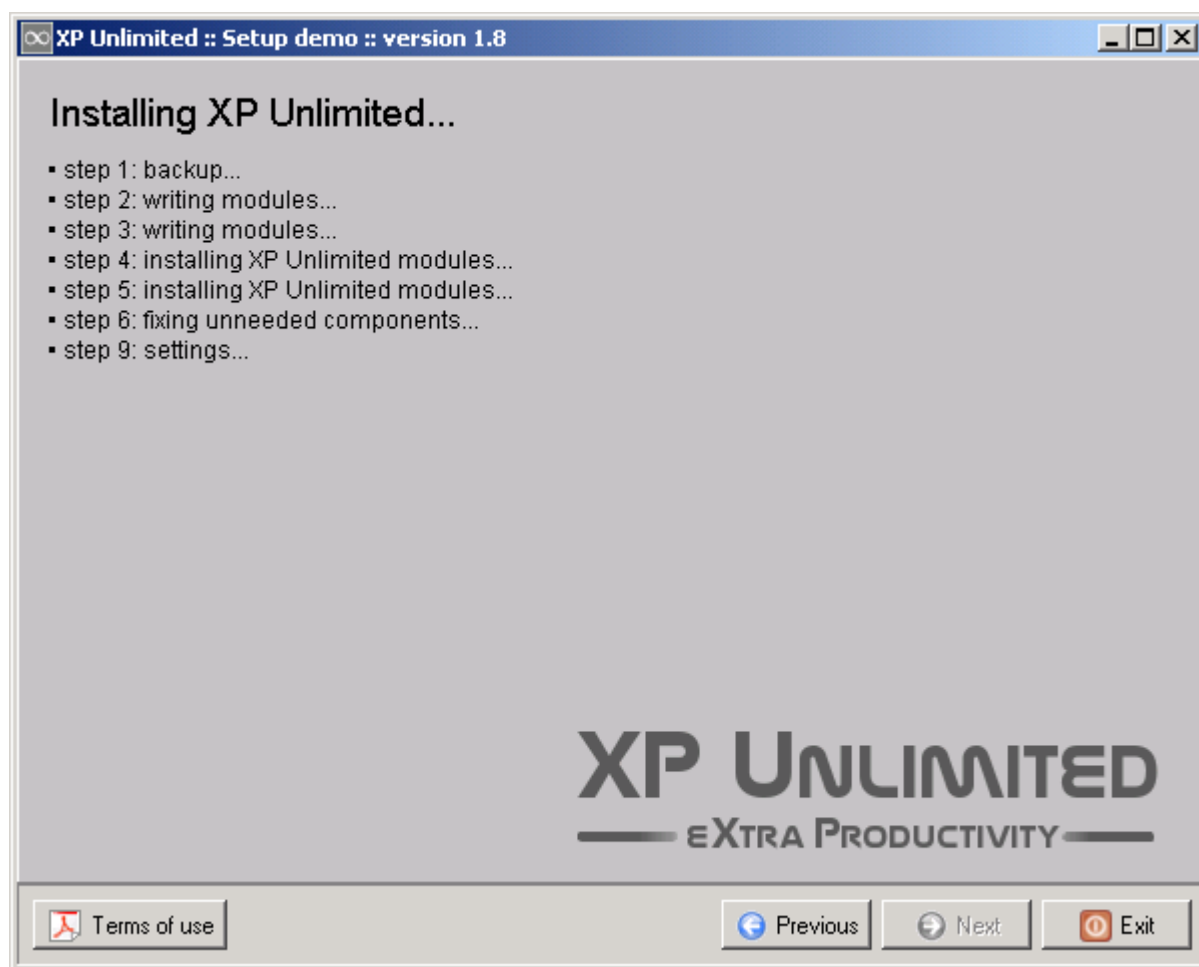
After entering your license code and the acknowledgement of the Terms of use, the Next-button becomes available.

The two fields for the HTTP Proxy are optional. Above entries are just an example. An one-time-only HTTP-request and reply is sent to our licenseservers in order to validate your license.



The setup program checks whether or not the installation of XP Unlimited is possible. In case it is possible, you can click on Next in order to install XP Unlimited. If you click on Exit now, nothing will be installed.

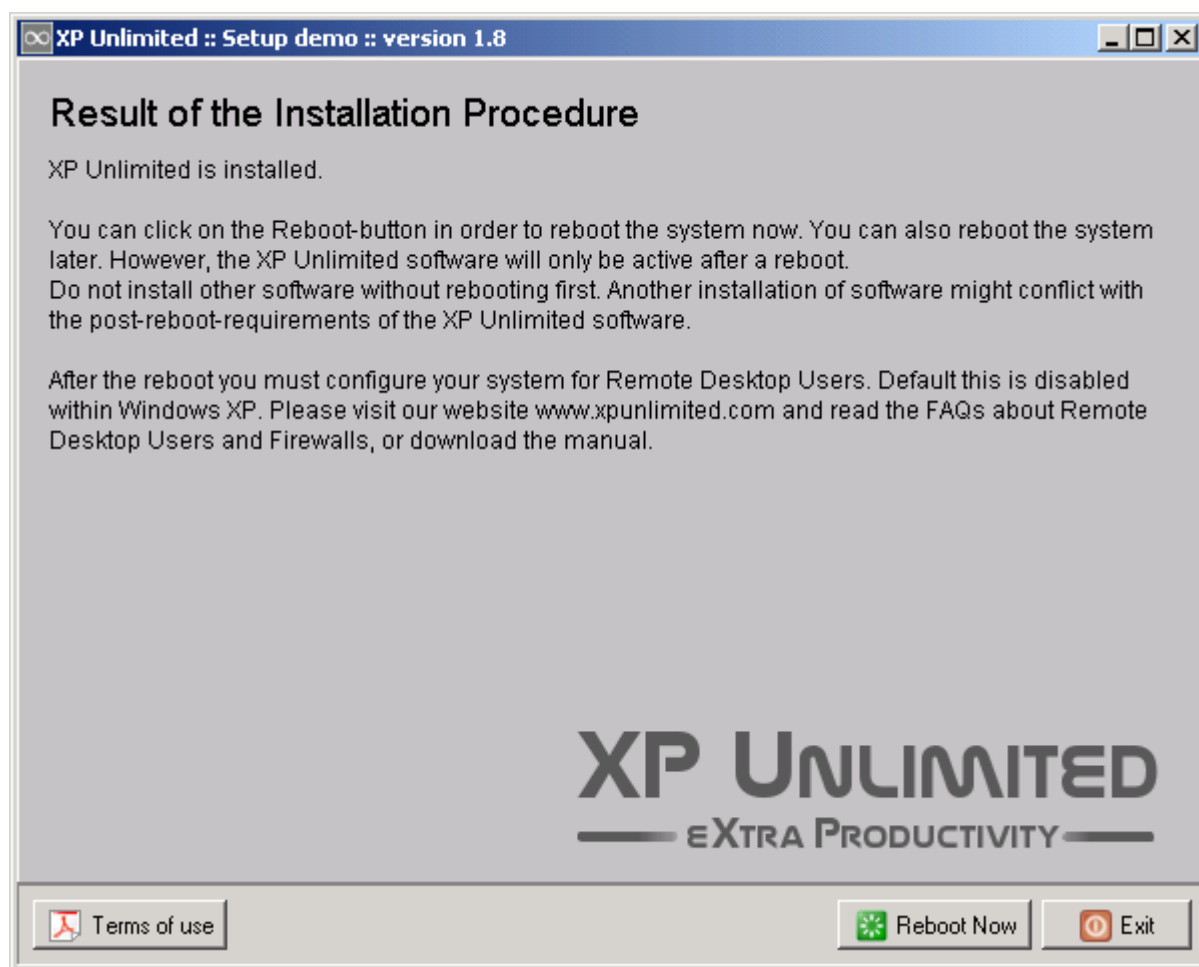
Note: when installing the full unlimited version, your server needs to be connected to the internet for validating (once) of your license.



The XP Unlimited software is installed In a couple of steps.

If you are wondering about step 7 and 8: these steps are only used in the Unlimited version of XP Unlimited. Step 7 and 8 are used for validating your license by contacting our website, and installing the license on your server. When installing the full unlimited version, your server needs to be connected to the internet for validating (once) of your license.

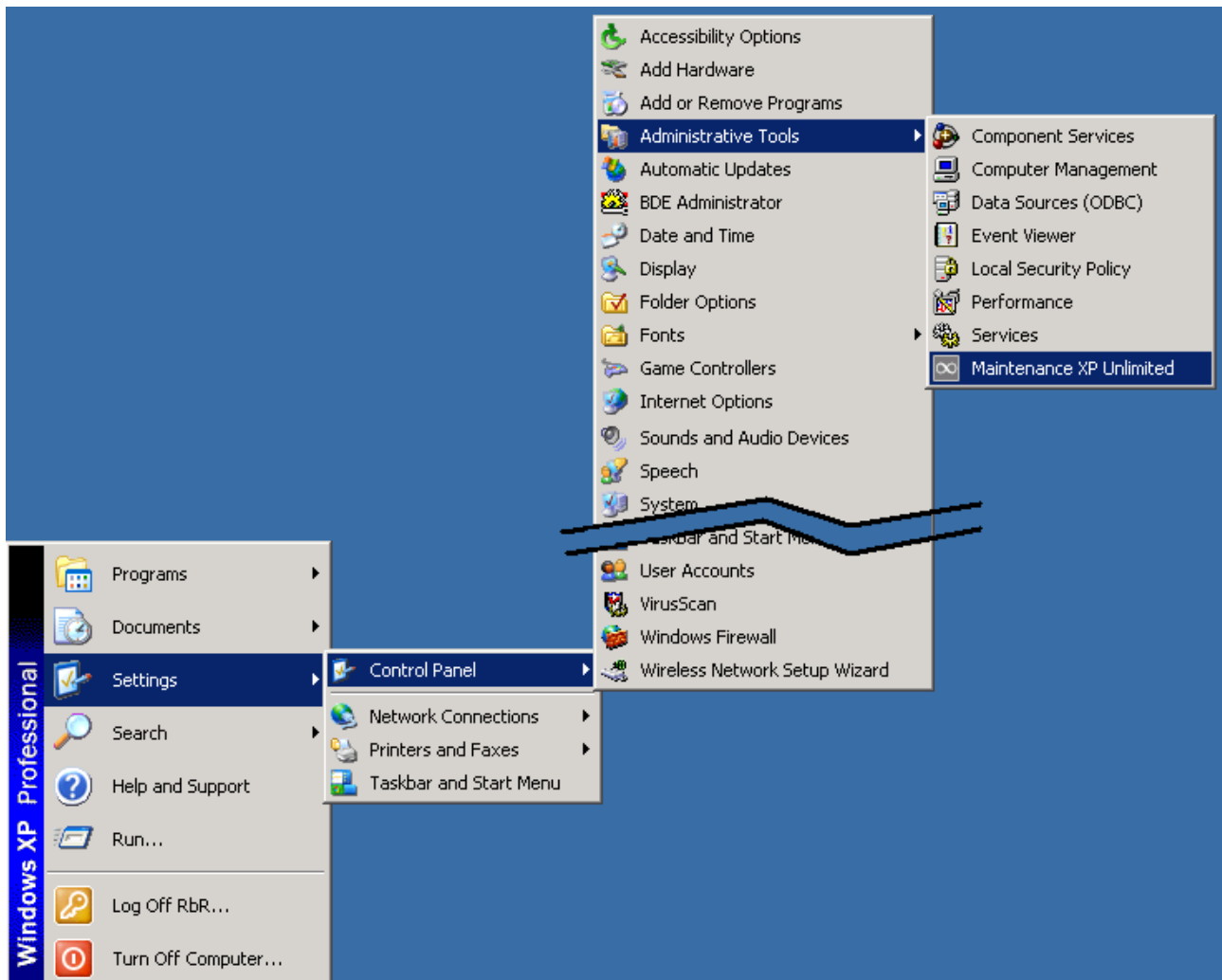
The full version can be re-installed on the same hardware in case of a problem.



The software is installed. You are one reboot away from using the XP Unlimited software.

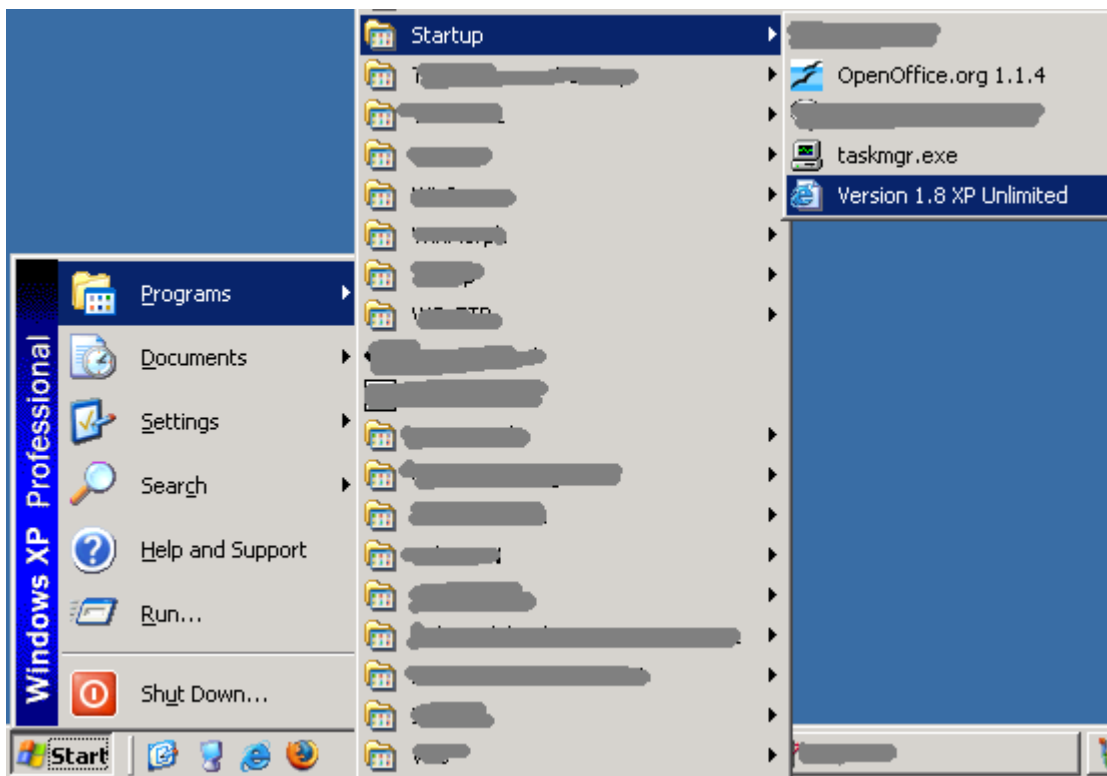
Don't forget the actions as described in chapter "Additional steps for using XP Unlimited".

Result of the installation



A program entry will be made in the Administrative section of the Start menu of the system.

Startmenu entry



An entry is made in the Startup group of the installing user. Reason of doing this is to inform you about the required actions as described in chapter “Additional steps for using XP Unlimited”.

Additional steps before using XP Unlimited

After the installation of the XP Unlimited software, and after the reboot of the system, you need to perform a couple of steps in order to use the XP Unlimited software:

- Create users that can login. If your Windows XP Professional system has only one user, you will hardly use the benefits of the XP Unlimited software.
- Make sure that all users have a password. It is not possible to have a remote desktop session with an user ID that has no password. This is simply to unsafe.
- Make sure that all users are member of the Windows XP group "Remote desktop users". If an user is not a member of the Windows XP group "Remote desktop users", this user will not be allowed to have a remote desktop session. You can also use our Maintenance Program to give any verified user access to the XP Unlimited server. A verified user is an user who has entered his username and password.
- Open your firewall for remote desktop sessions. The port that needs to be open is TCP port 3389. Default this port is closed, so your Windows XP Professional system does not allow you to have any remote desktop session.

Please visit our website, specific the support-pages. You will find detailed examples and howto's between our FAQ's which describes how you can perform these steps. It is not difficult at all; most likely you can perform these steps in a couple of minutes.

Sometimes we get requests like "why does your setup program not open port 3389" or "could your setup program gives us 10 demo-users with a password".

It would not be easy for us to open your TCP port 3389 on your firewall. We do not know which firewall you have, like ZoneAlarm, Windows build-in, Norton, Kerio, etc. We do also not know through which network card you want to enable remote desktop sessions. For instance, you can enable your firewall in such a way that remote desktop sessions are allowed from your internal company network, but are not allowed from the Internet.

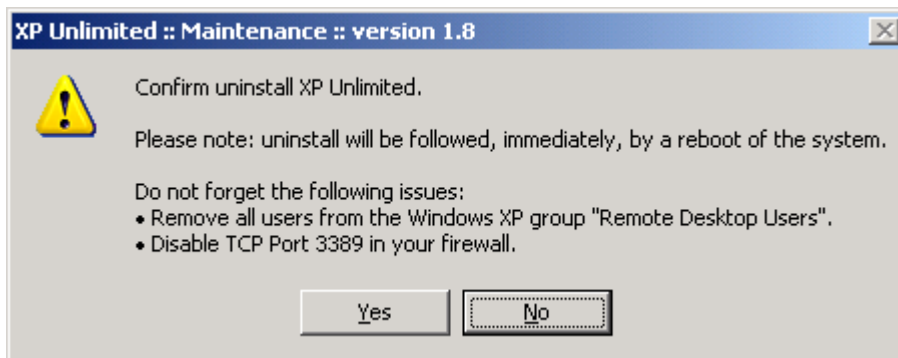
Therefore it is you who will have to open TCP port 3389, because you know the circumstances under which port 3389 should be open or not.

We do not want to give you a couple of demo-users including passwords. In case our setup program comes with the user demo01 through demo10, every system in the world will have those default XP Unlimited users. Because these users will be able to perform a remote desktop session, it is quite a security risk.

Therefore it is you who must define the users, including (hopefully unique) usernames and passwords.

For test purposes you can download our "Generate User Tool". It is available in the Support / FAQ's part of our website.

Un-install



Using the Maintenance tool you can un-install the XP Unlimited software. Prior to un-installing this notification is shown.

The Maintenance tool is described in paragraph "Operations of XP Unlimited".

No other users should be active while un-installing

Be sure that nobody is logged in except for the Administrator. In case other users are logged in, systemfiles and settings are locked and can not be restored by XP Unlimited.

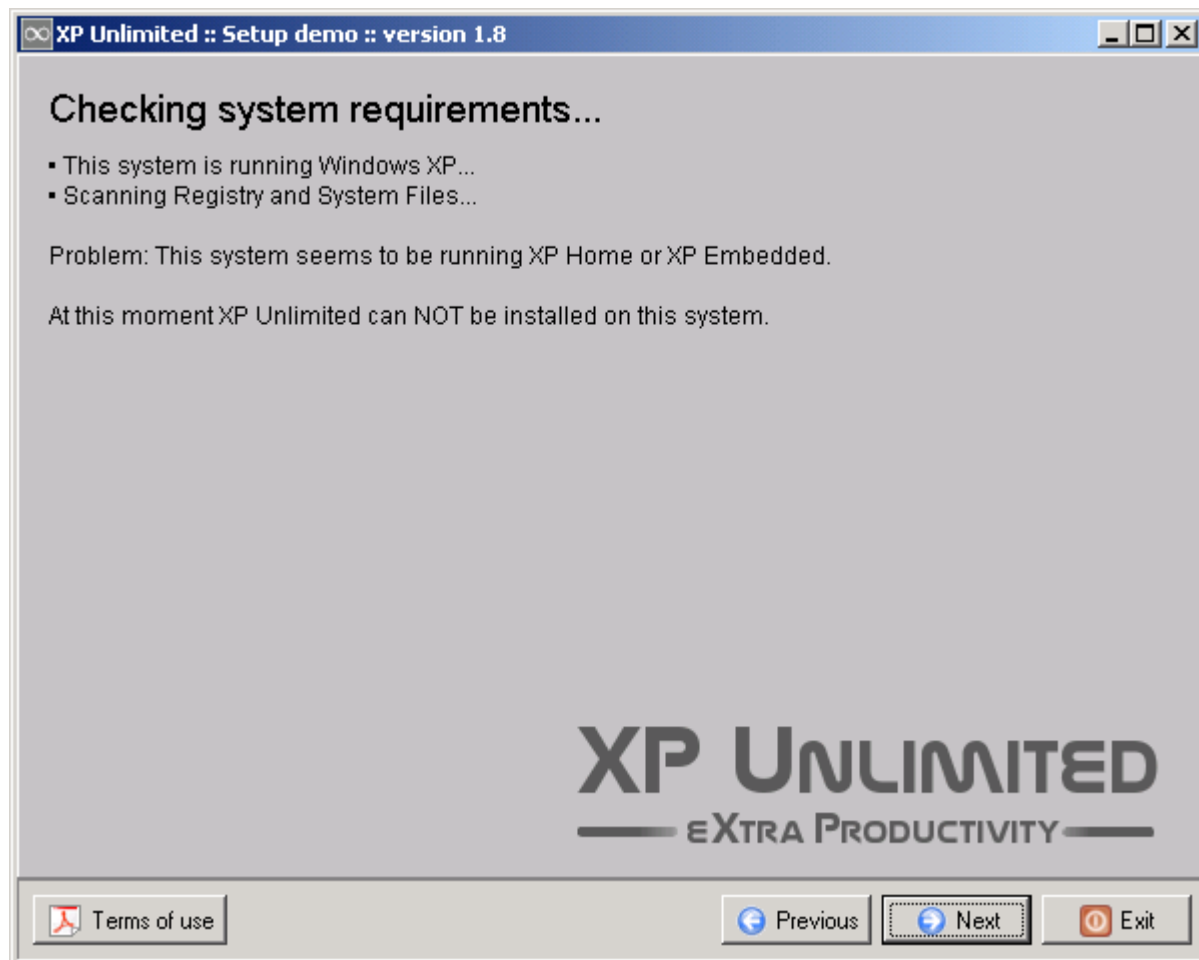
Manual activity after un-install

After the un-install of the XP Unlimited software you should perform the following actions:

- Configure your firewall in such a way that remote desktop sessions are not possible.
- Remove all users from the group Remote Desktop users.

Setup Problems

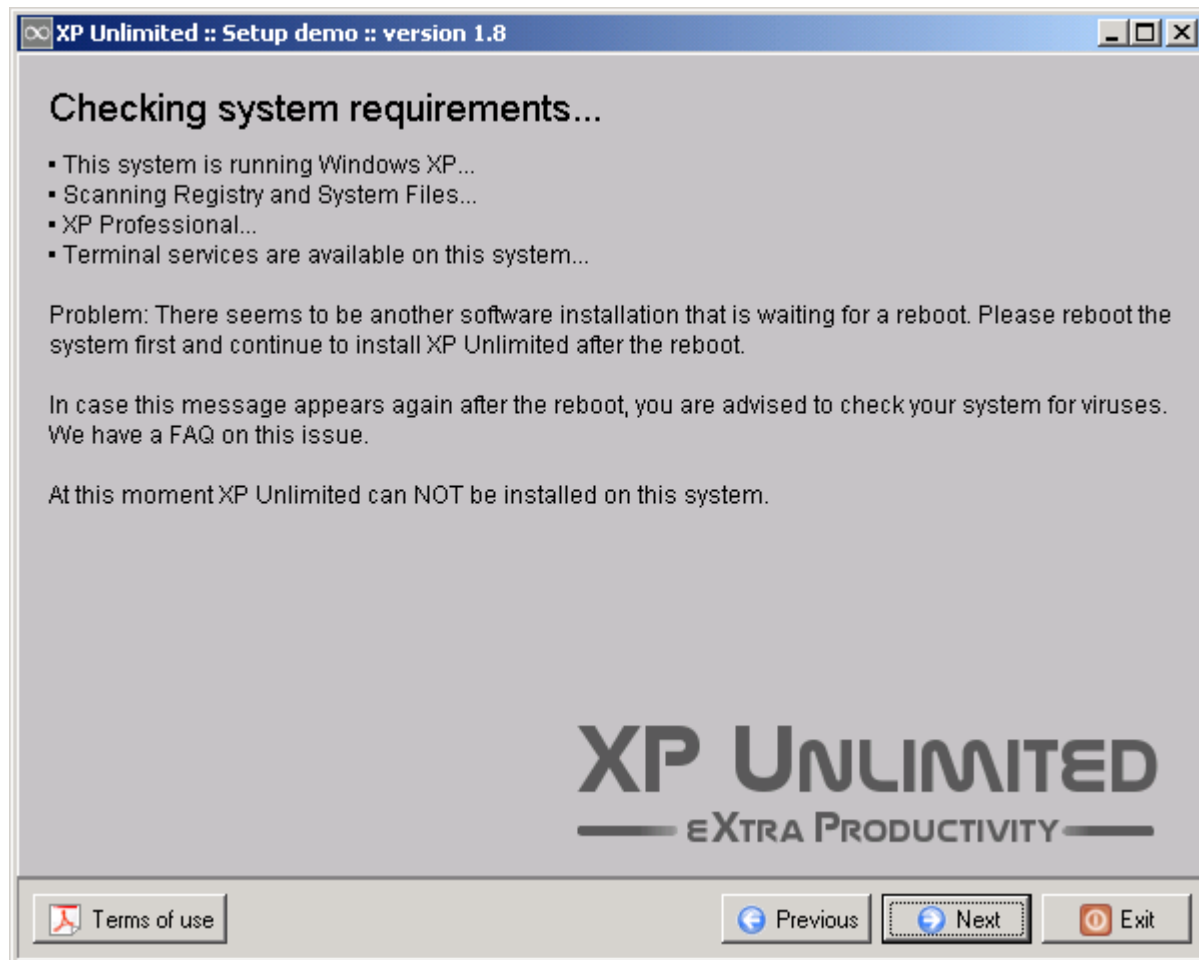
Example 1



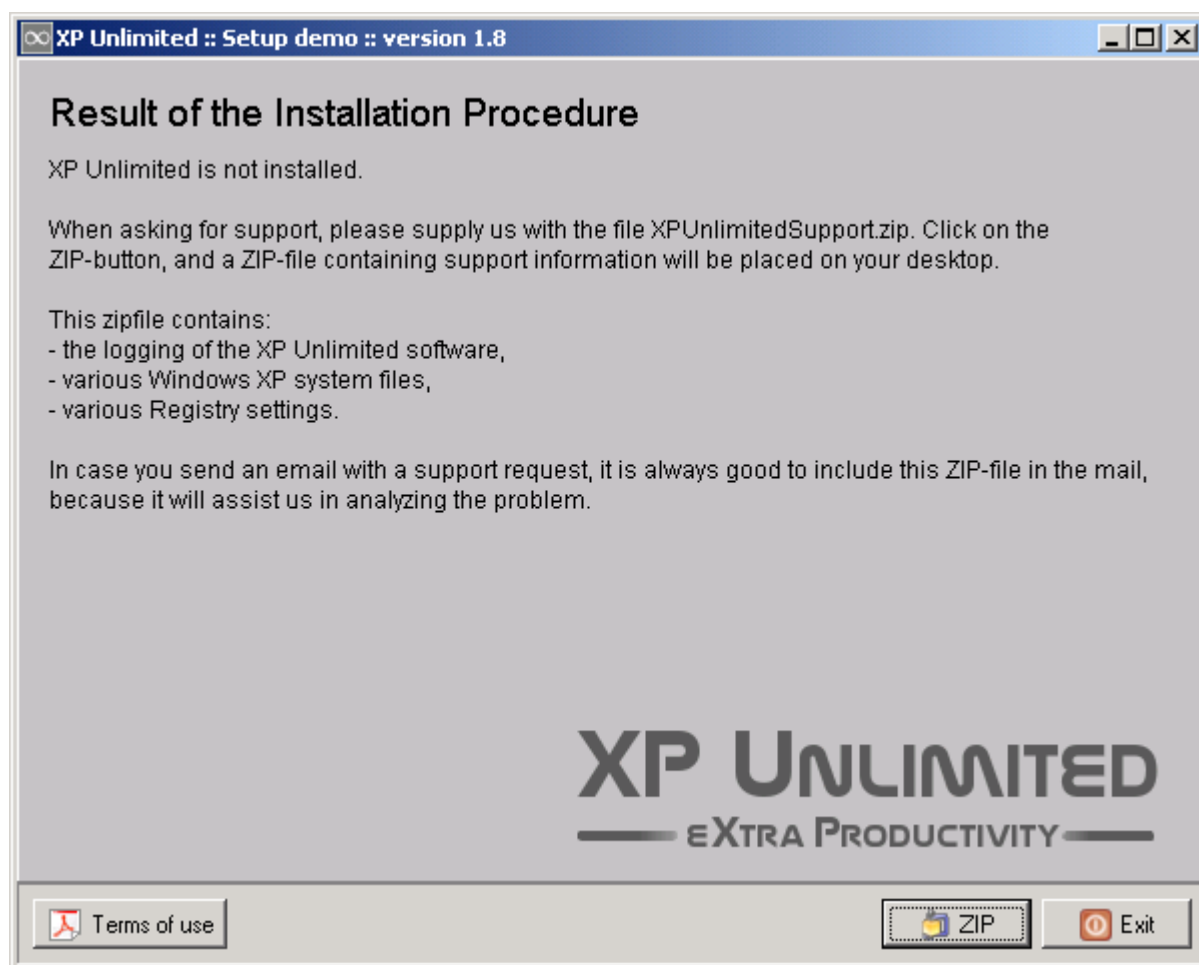
The Setup program does a checking of the system for requirements. In case the requirements are not met, you will be informed what the problem is.

XP Unlimited can not be used on Windows XP Home or Embedded.

Example 2



Final screen in case of Setup problems



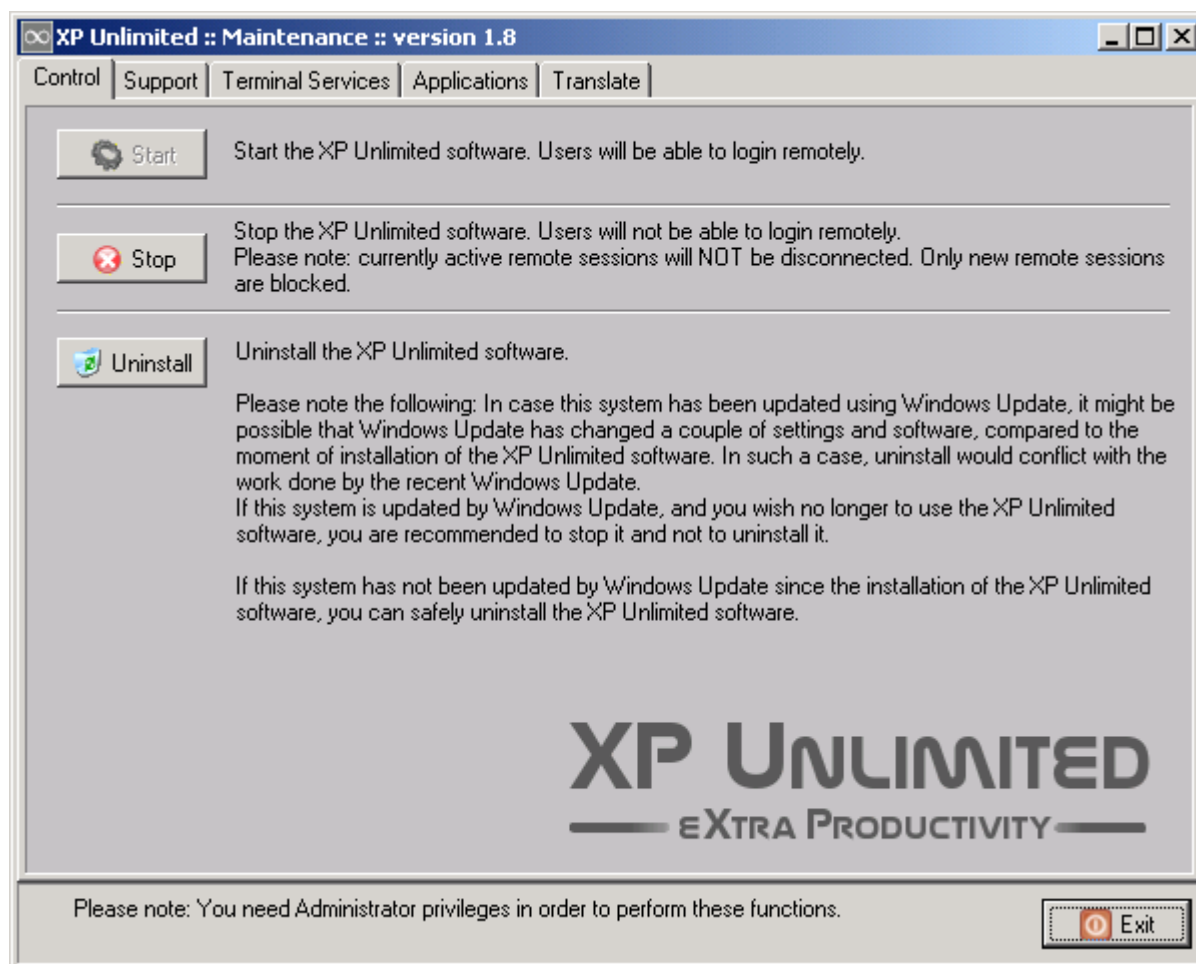
In case the Setup program decides that installation is not possible, it will finish as shown.

If you need support on the problem, you are requested to supply us with the XPUnlimitedSupport-ZIP-file. This will assist us with analysing the problem. You can use the ZIP-button to create the ZIP-file. It will be placed on your desktop.

Operations of XP Unlimited

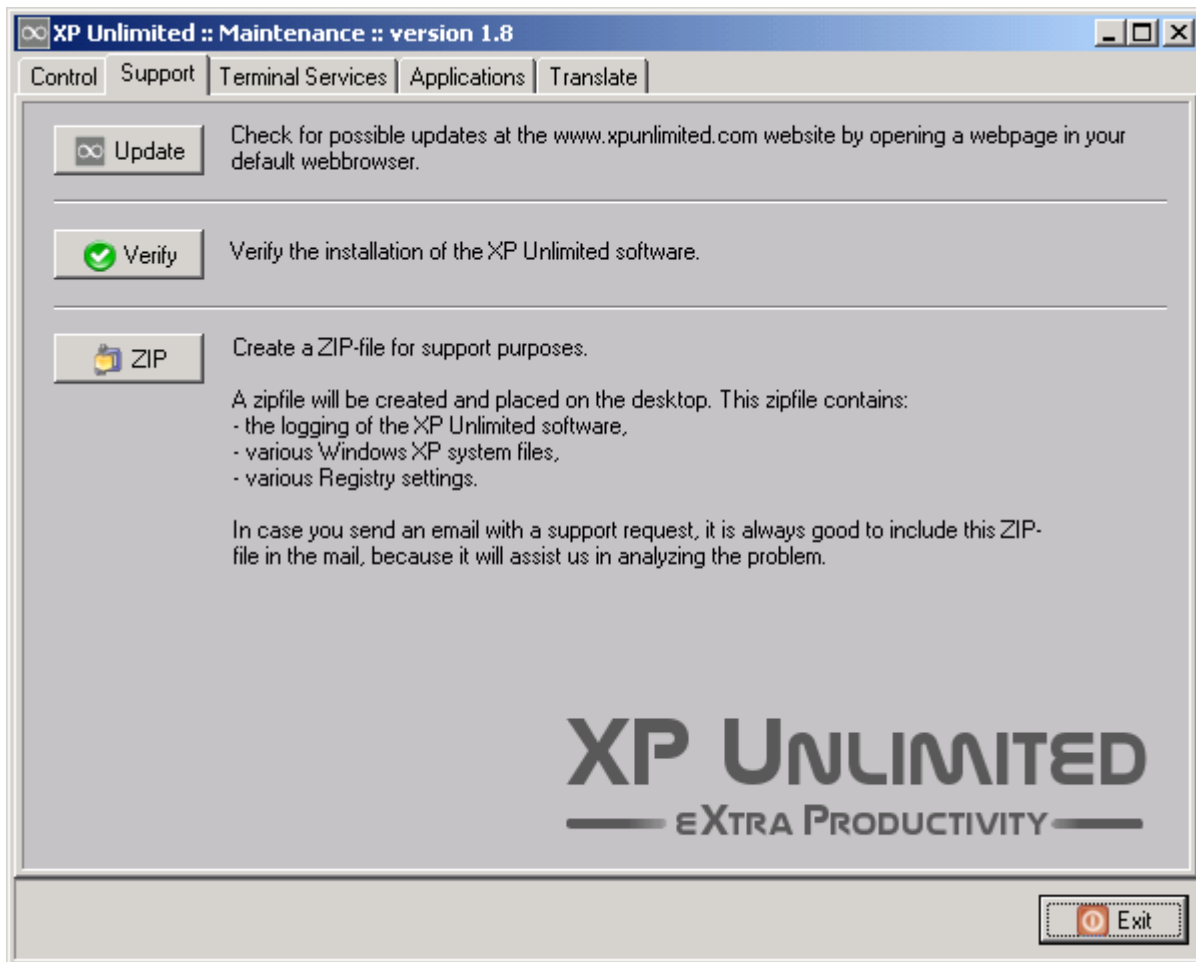
Maintenance tool

The Operation of XP Unlimited can be monitored and controlled using our Maintenance tool:



The first tabpage can be used to Start and Stop the functionality of the XP Unlimited software.

You can also first tabpage for un-installing the XP Unlimited software.



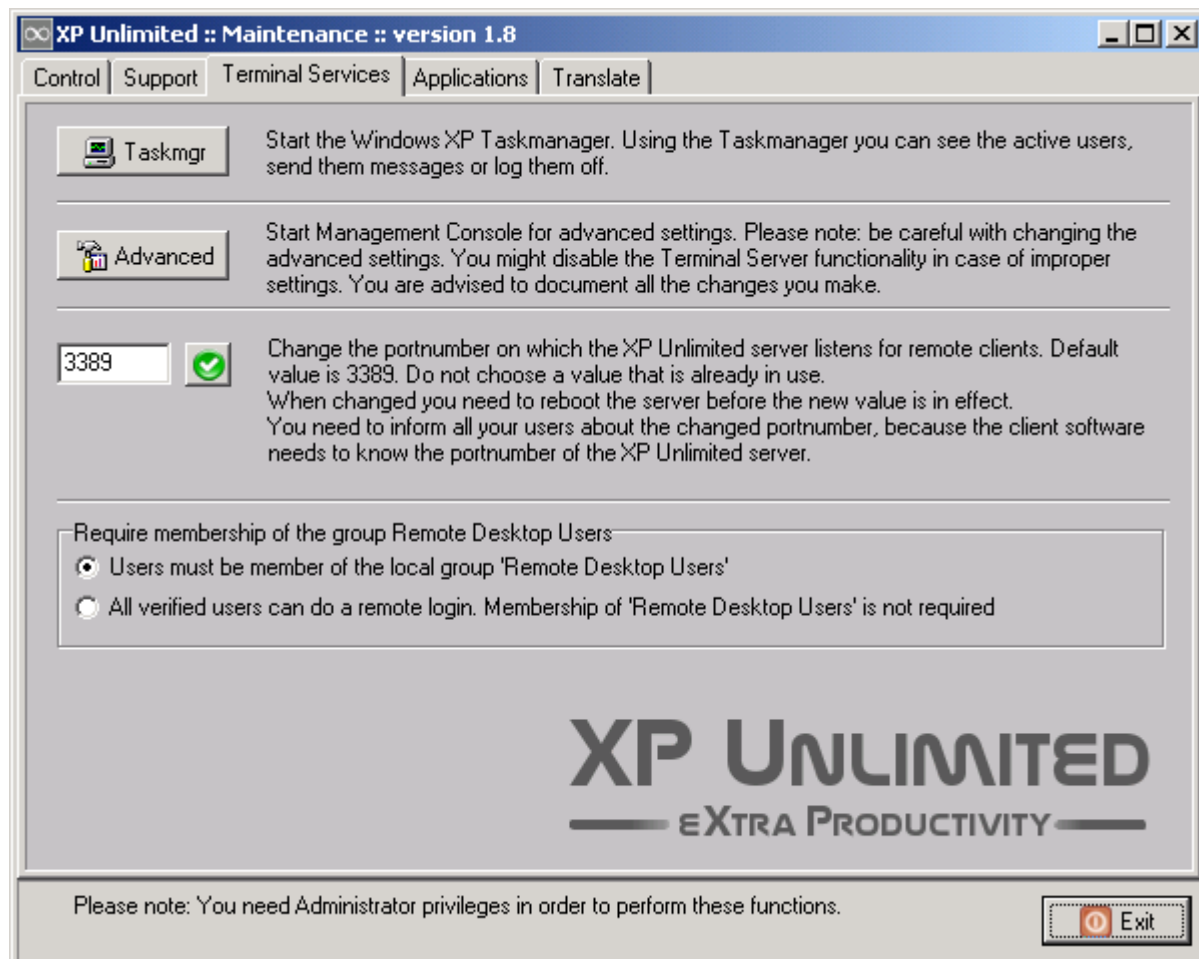
The Update-check button opens a website-page of the XP Unlimited website. This page will inform you whether or not you are running the most recent version of XP Unlimited, or an old version.

The Verify-button does the same check that is done while installing. Sometimes during a Windows-Update or because of the installation of other third-party software, important settings or files are replaced. By running a verify, you will be informed what is wrong. Most of times a re-install of the XP Unlimited software using the Setup-program will fix all settings.

The ZIP-button creates a ZIP-file on your desktop. This ZIP-file contains the information IPConsult needs for giving you support.

Advanced Terminal Services Control and Settings

The third tabpage of the Maintenance tool contains two buttons in order to monitor the users and to do advanced settings.



Monitoring using Taskmanager

Monitoring of Remote Desktop Users can be with the Taskmanager. See the paragraph “Monitoring using Taskmanager”.

Microsoft Management Console

Advanced Settings is done using the Microsoft Management Console. When installing XP Unlimited using the Setup program, several default Terminal Server settings are applied in order to make things work. You can do some fine-tuning, but you are advised to be carefully with changing the default settings. You might render your system unusable.

Please read the paragraph “Tips from IPConsult”. We have compiled some advices about the Advanced Settings you might consider useful.

Portnumber

You can change the default portnumber which is used by the XP Unlimited Terminal Server for listening for Remote Desktop Sessions. The default number is TCP portnumber 3389.

The range of the custom value is 1000 – 65534. Although a number lower then 1000 might be technical possible, this is disabled in order to prevent problems.

If you change the portnumber to another value:

- You will also have to change your firewall settings.
- If you use some kind of router to connect to the Internet, most likely you have defined a NAT-entry in your router in order to forward a port to the XP Unlimited Terminal Server. You must also update this NAT-entry in your router.
- You must inform all you users, because the client software they use for connecting to the XP Unlimited Terminal Server needs to know about the changed portnumber. On our website we have some FAQ's about the client software for clients running Windows and clients running Linux.

Please note: a reboot is required before the new portnumber is used by the XP Unlimited Terminal Server.

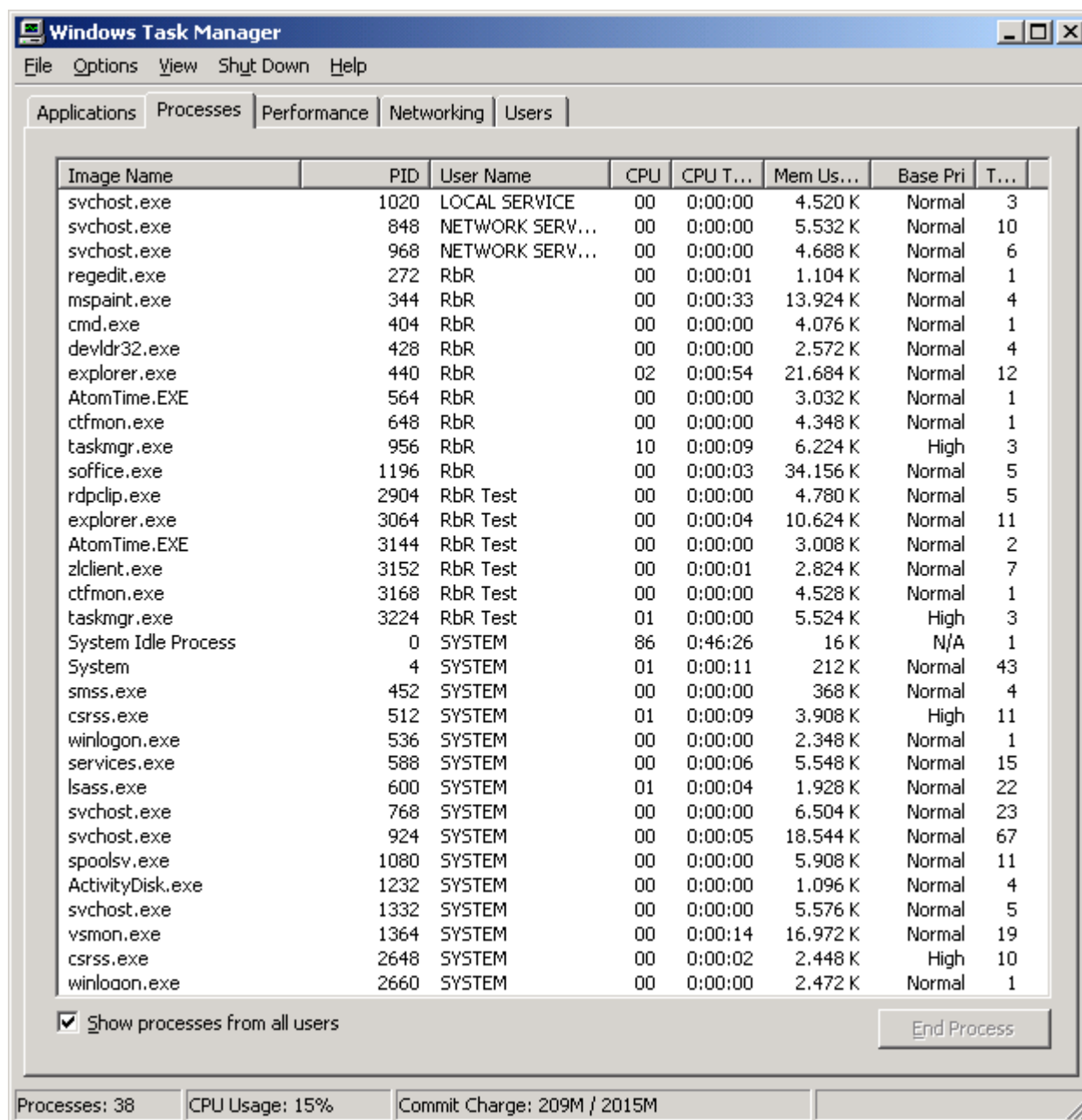
Require membership of the group Remote Desktop Users

Default only users who are member of the group Remote Desktop Users can login. You can remove this requirement by selecting “verified users”. A verified user is an user who has a valid username *and* password defined locally in WXP.

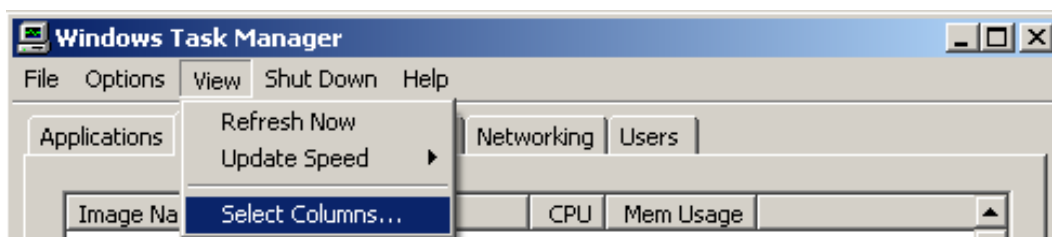
Monitoring using Taskmanager

Processes

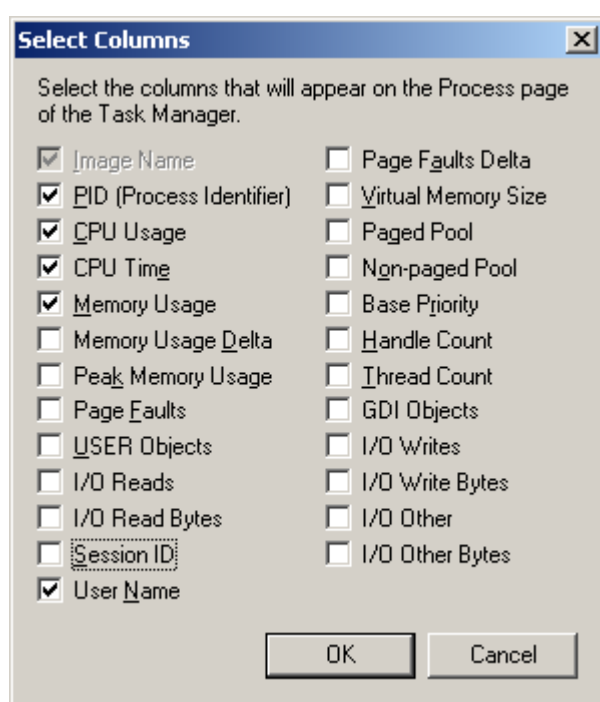
The processes tabpage of the Taskmanager shows you the running processes of all users.



In case you do not see all columns, use the menu of the Taskmanager to get more columns:

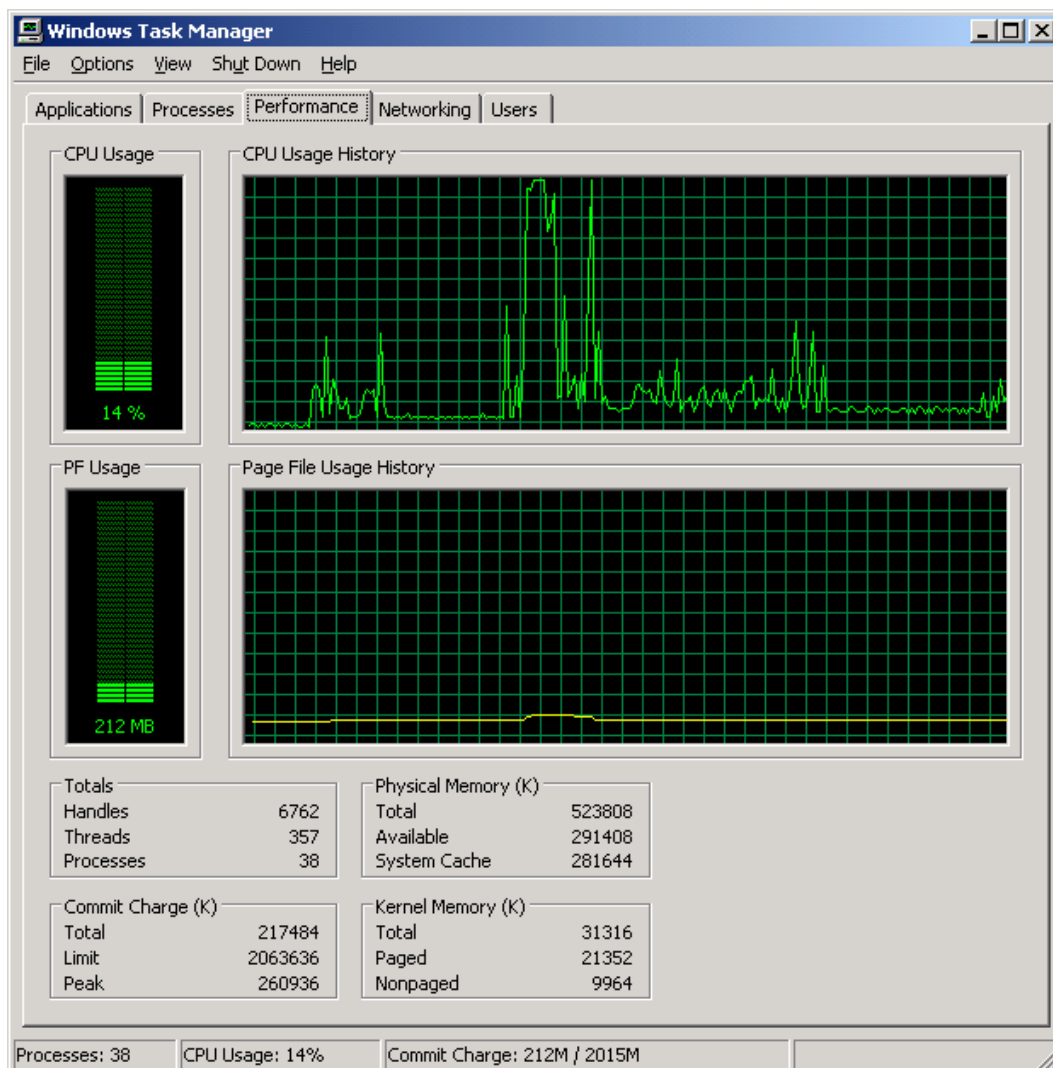


We like to see at least the following columns:



After enabling the “User Name”, you can sort all processes using the column User Name. By doing this you can see what a specific user is doing.

Performance



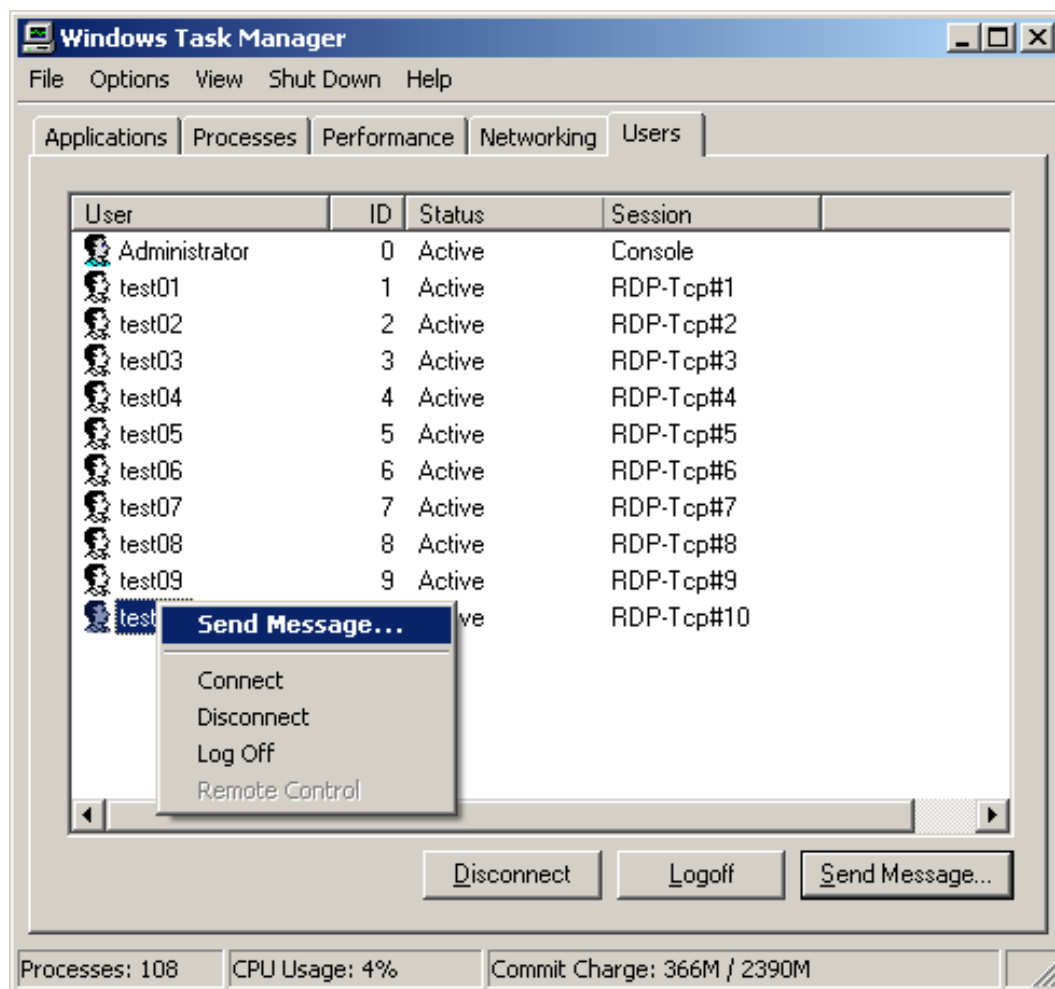
The performance tabpage of the Taskmanager shows you how your system is performing. A couple of simple rules are the following:

- The cpu-load should not be high continuously. A continuously high cpu load does not indicate that your system is too slow, but most of the times it indicates that a single user is running some kind of cpu-intensive application (like a silly screensaver) and consuming all cpu power. Go back to the previous tabpage and use the column cpu (percentage) to determine which user and which process is consuming all cpu power.
- The amount of memory “Commit Charge, Total” should be lower than “Physical Memory, Total”. The amount of memory “Commit Charge, Limit” is allowed to be higher than “Physical Memory, Total”, however only for a short or special moment. It is desirable to have more memory than needed by all users, because a shortage of memory implies that WXP starts to use its swapfile, and that will make the system slow.

Users

The Users tabpage of the Taskmanager shows you all users. Each user can send messages to the another users.

The Administrator can also disconnect or logoff an user.



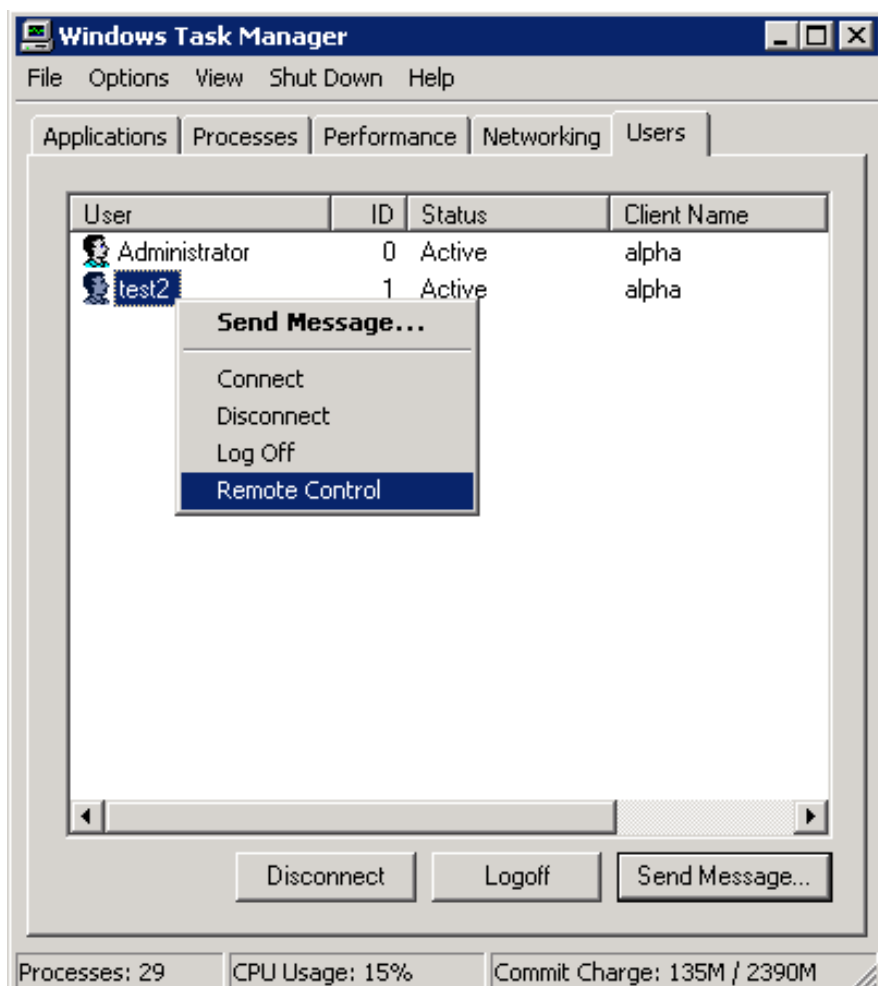
Difference between disconnect and logoff

When a user gets disconnected, his desktop and all of his applications keep on running. When the user connects again (entering his userID and password) he will get his own desktop back with all the active applications. This is useful for the user, but it might not be desirable for all the other users. A running desktop with applications consumes memory and cpu. Therefore it would be better if the user logoffs, because then his desktop and applications will be terminated. This saves memory and cpu.

Remote Control

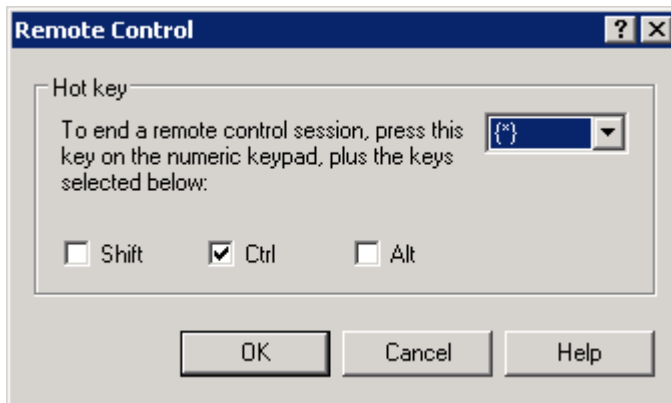
When working behind the console of the XP Unlimited Server, it is not possible to “shadow” or to “remote control” another session.

However, when working using a Remote Desktop Session, an Administrator can “shadow” or “remote control” another session:



Using the Taskmanager, an Administrator or an user with Administrator privileges can Remote Control the other users.

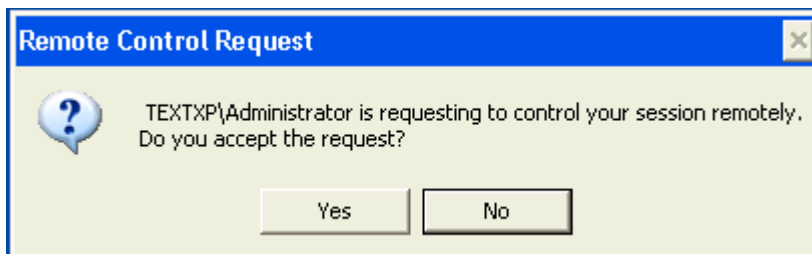
The following dialog is shown:



The hot-key Ctrl-* (found on the numeric keypad) is a good default hot-key to exit the Remote Control Session. The user can not use this hot-key. Only the Administrator can use the hot-key to terminate the Remote Control Session.

Terminating a Remote Control Session means that both the Administrator and the user continue to work with their own session; terminating a Remote Control Session does not imply that the user or Administrator get disconnected.

The user which session is about to be "remotely controlled" by an Administrator, has to acknowledge it:

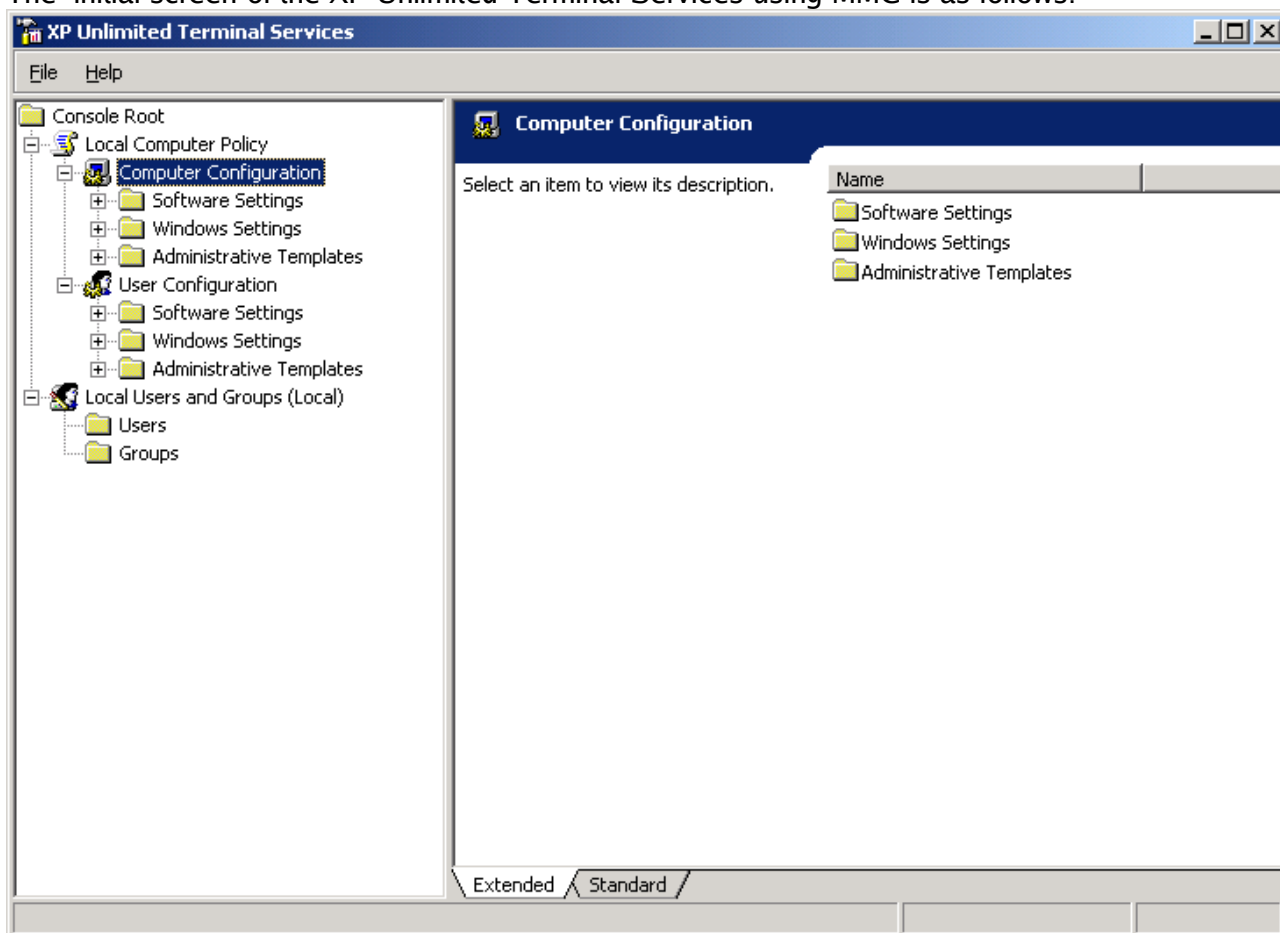


Using the Advanced Terminal Settings (see next paragraph) it is possible to configure the XP Unlimited server in such a way that a Remote Control Session is possible without acknowledgement of the user.

Advanced settings using Microsoft Management Console

Terminal Services

The initial screen of the XP Unlimited Terminal Services using MMC is as follows:



Please note: initial it can take several seconds to show this screen. When opening the “Administrative Templates” it might take several seconds depending on the cpu-speed of your system. This is normal; this is the way it works.

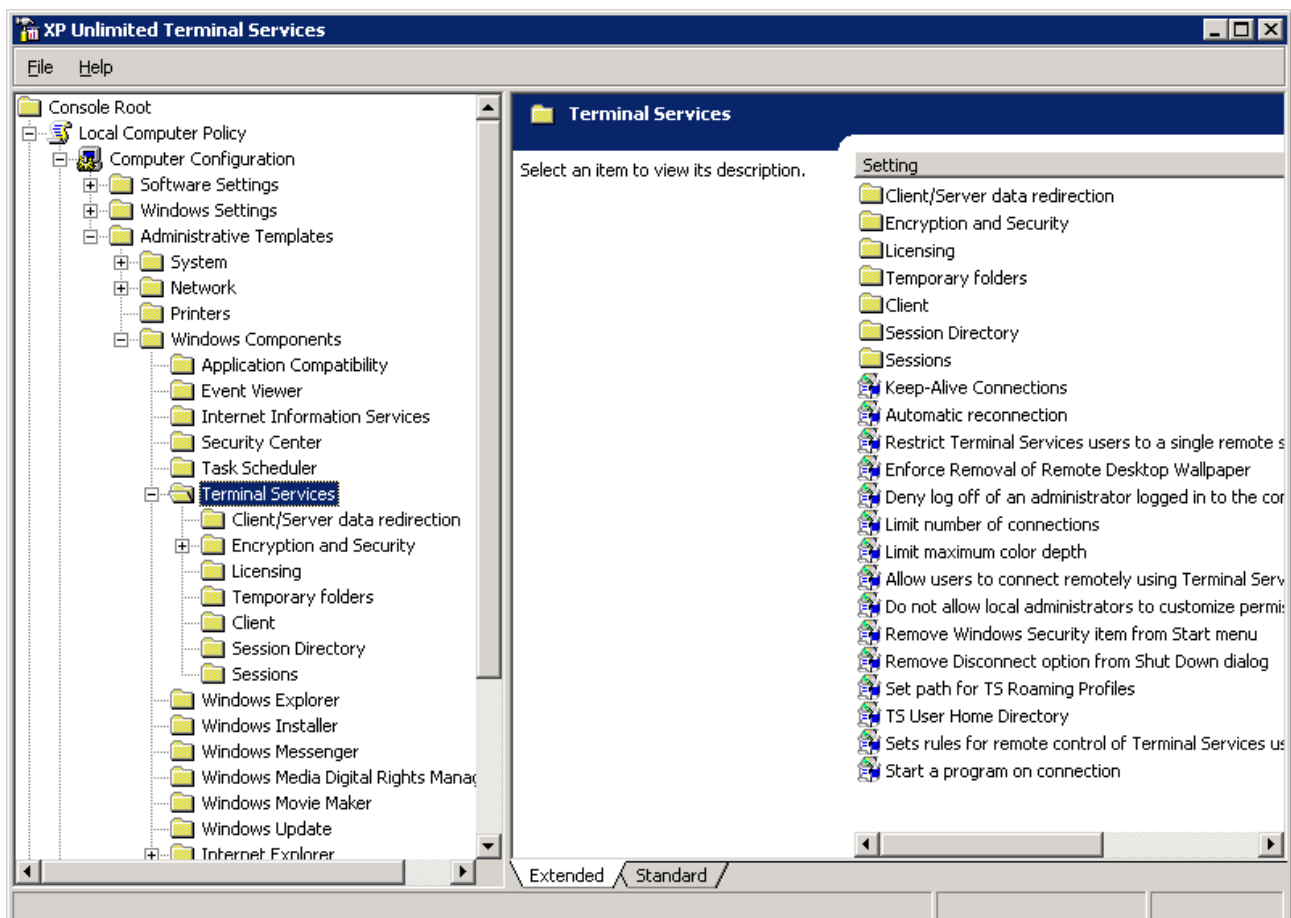
This screen gives you access to

- Advanced Settings of Terminal Services.
- Users and Groups.

The Advanced Settings of Terminal Services can be used for some fine-tuning. Please read the paragraph “Tips from IPConsult”. We have compiled some advices about the Advanced Settings you might consider useful.

The Users and Groups can be used to give users a password, to make them member of the group “Remote Desktop Users”, etc. You can find some examples on Users and Groups between our FAQ's in our website.

By opening the Administrative Templates / Windows Components you can find the Advanced settings of Terminal Services:



You can do some fine-tuning, but you are advised to be carefully with changing the default settings. You might render your system unusable.

When you click on an option, extra text will appear that explains this option. You are advised to read this text carefully prior to changing an option.

Please note: not all options are implemented. Several options are displayed because Windows XP shares the same "code base" with Windows Server 2003, but those options are not implemented (by Windows XP or by XP Unlimited).

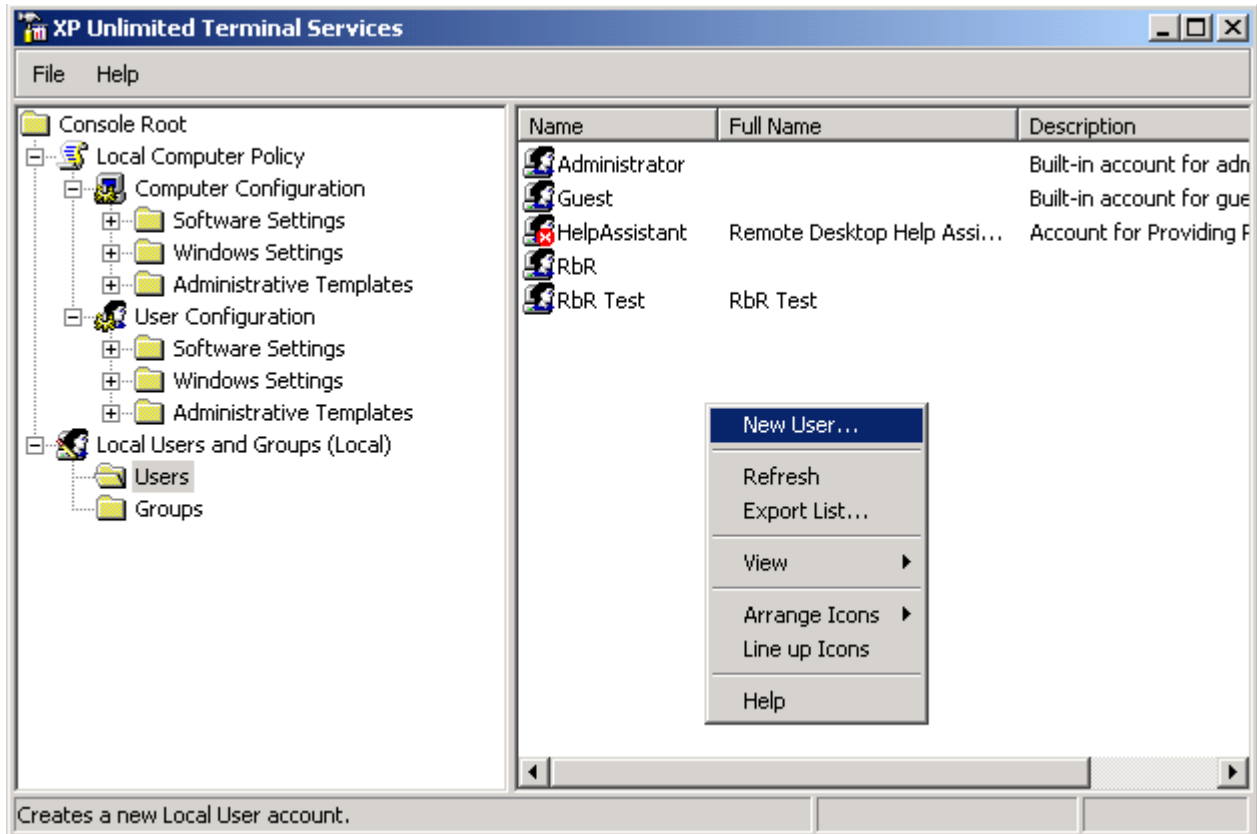
Reboot required

Changing an Advanced Setting of the Terminal Services will require a reboot of the Windows XP System; the change will be in effect after a reboot.

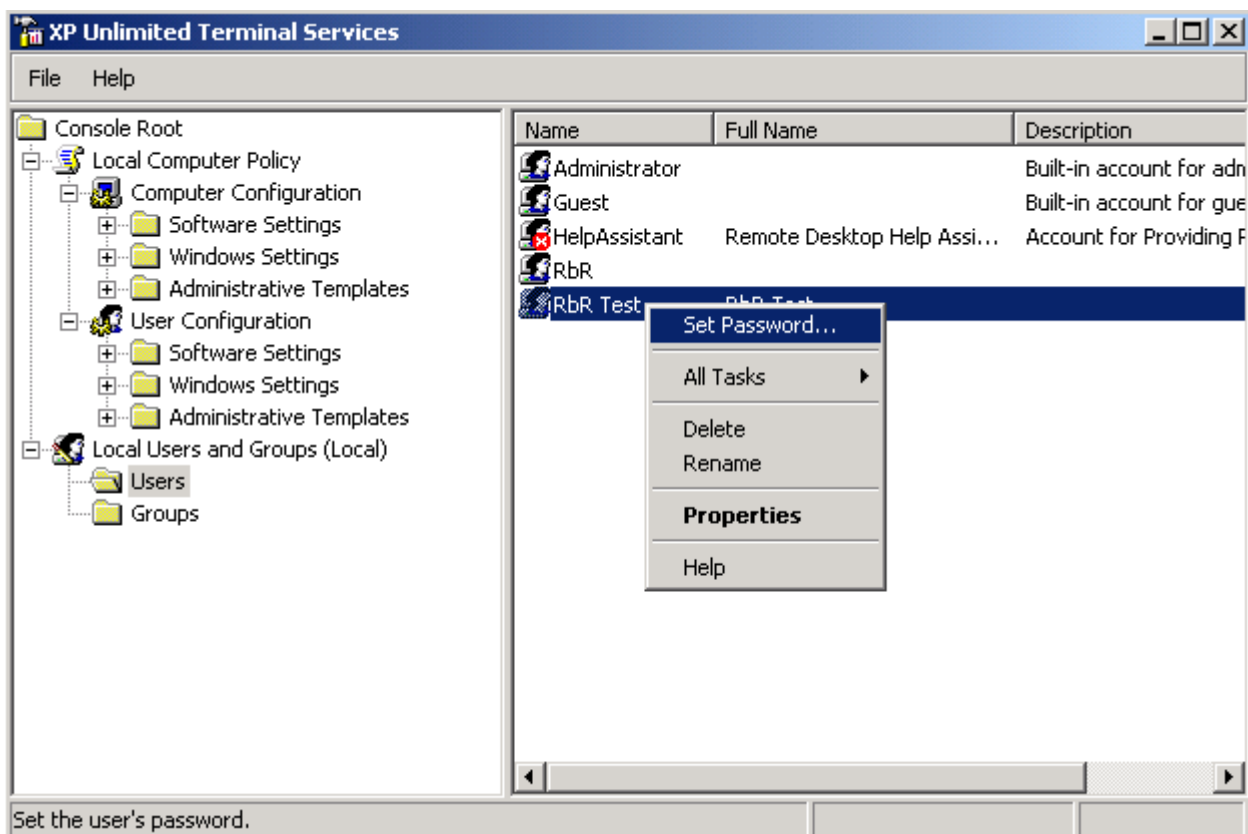


Users and Groups

Using Users and Groups you can do the following tasks:

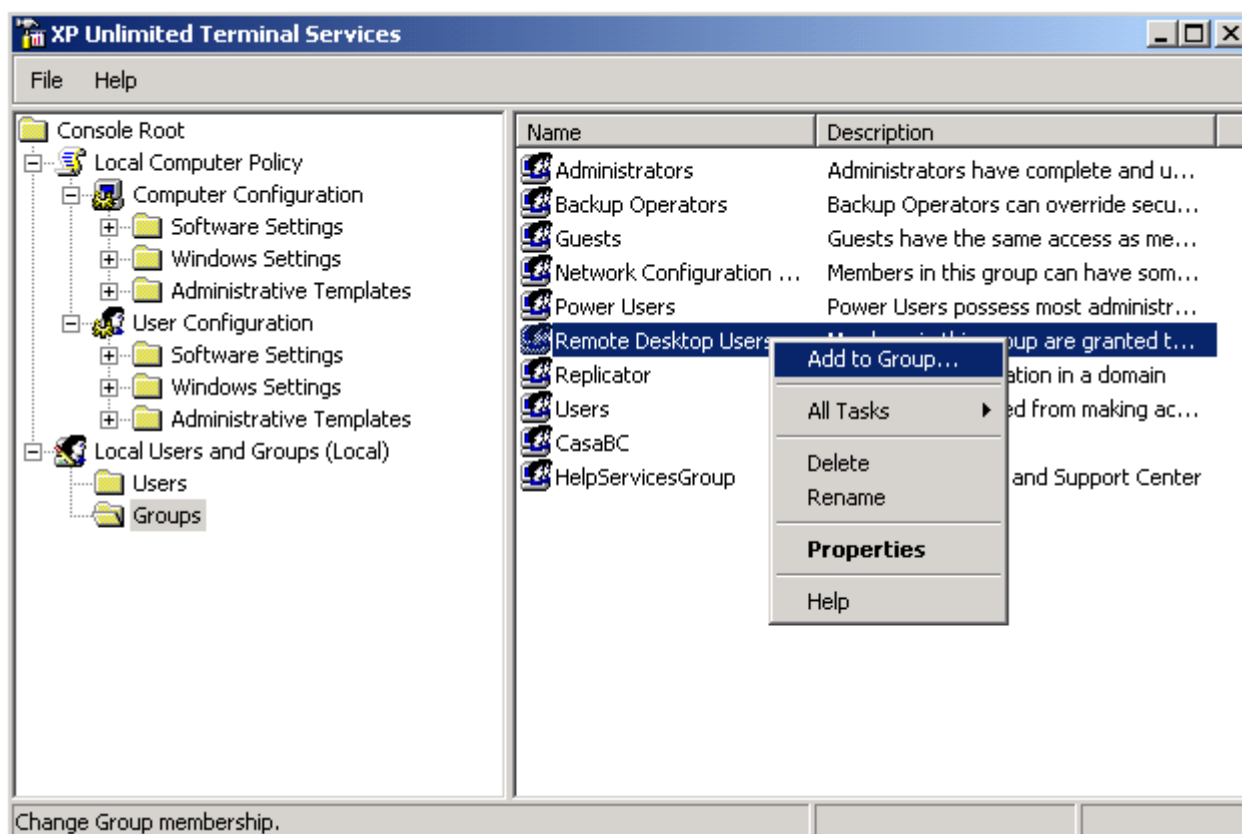


Select Users in the left panel. Use the right mouse button on the “white space” in the right panel. A sub-menu will be shown, including New User...

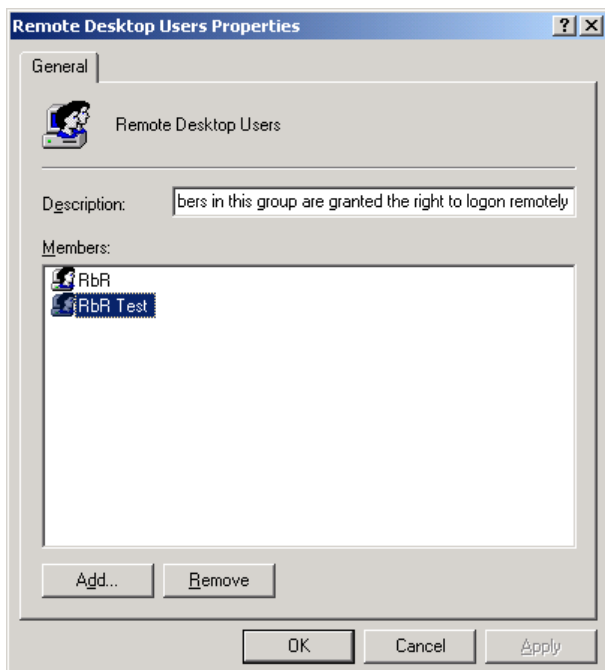


Use the right mouse on a user. The sub-menu that is shown contains the option for giving the user a password.

Users without a password can not have a remote desktop session. This is to unsafe.



Select Groups in the left panel. Use the right mouse on the group Remote Desktop Users. The sub-menu that is shown contains the option for adding an user to the group. Removing a user's membership of the group Remote Desktop Users is also done using the “Add to Group” menu options. When clicking on the sub-menu “Add to Group”, a dialog is shown that can be used for both adding and removing users.



Only users who belong to the group Remote Desktop Users can have a remote session.

Terminal Services tips from IPConsult

Performance

Enforce Removal of Remote Desktop Wallpaper

Enable this setting and “fancy” desktop wallpapers will not be shown on remote desktops. This will make the remote desktop session faster.

Limit maximum color depth

Set this setting to 15 bit. This will give decent colours for all your applications. Using 24 bit colours will make the remote desktop session (a bit) slower and request more resources from the server, while the user will not really notice the difference between 24 bit colours or 15 bit colours

Remove Disconnect option from Shut Down Dialog

By removing the Disconnect option, a user can not choose to disconnect his session, but only to logoff. A session that is only disconnected consumes resources from the server because the desktop of the (disconnected) user keeps on running and all applications keep on being active. By forcing the user to logoff, the resources of server become available for the other users. Currently there are some problems related to disconnected sessions. It is better to logoff then to disconnect.

Security

Encryption and Security | Always prompt client for password upon connection

A user can save his userID and password in his remote desktop client. Doing so, a user only can do a “double click” on his remote desktop client, and he is logged in. He does not have to enter his name of password, because those two are saved in his remote desktop client.

When he leaves his desk, somebody else could just “double click” on his remote desktop client and logging in on the server.

Using this setting all users are forced always to enter their password.

Sessions | Time outs

Several time-out options are possible. Short time-outs is always a good thing from a security point of view.

Sets a time limit for active but idle Terminal Services sessions

This one should be for instance 30 minutes. After 30 minutes of doing nothing, the remote desktop session will be disconnected or logged off.

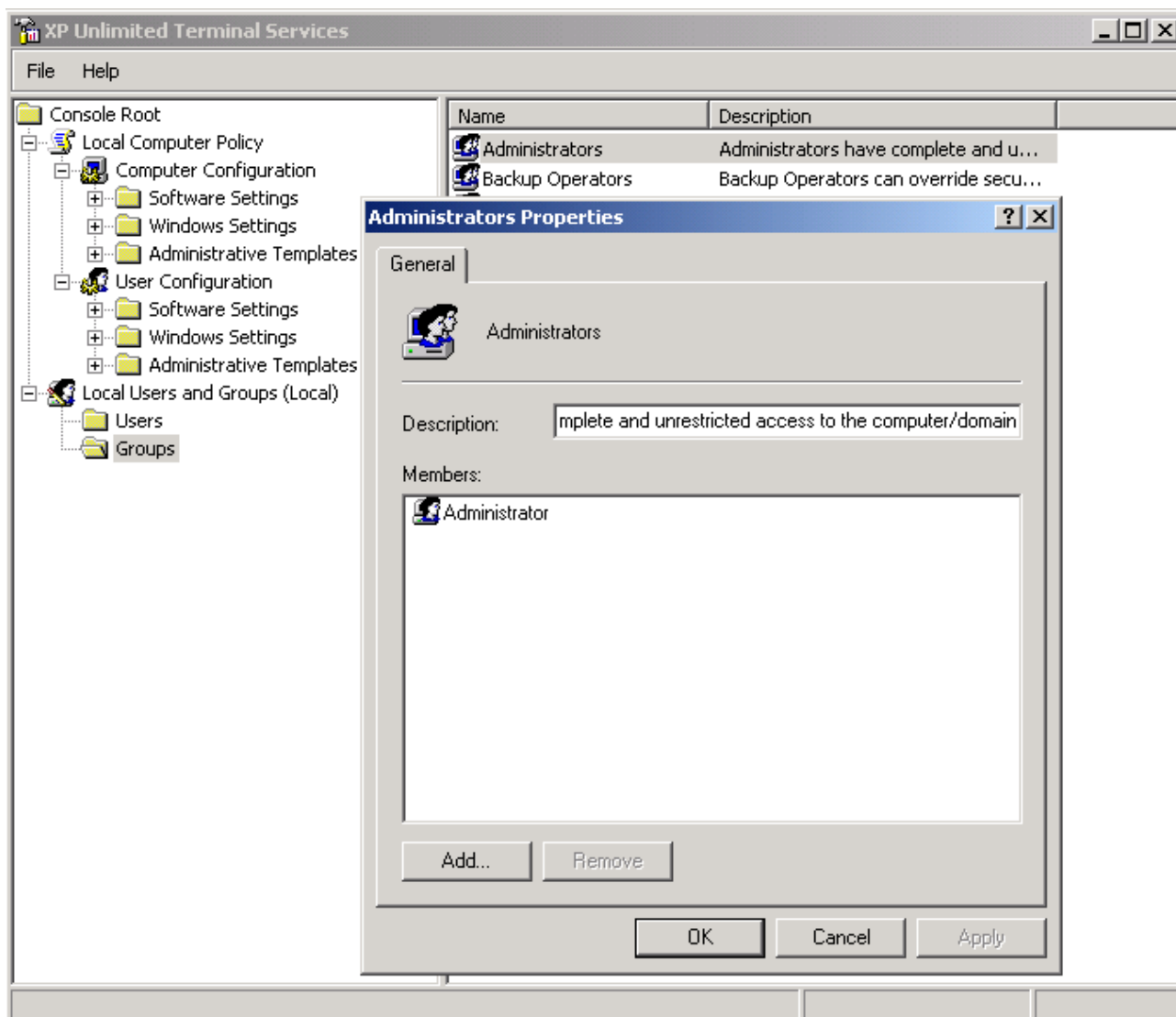
Terminate Session when time limits are reached

When the time limit of 30 minutes is reached, the remote desktop session will not be disconnected, but completely logged off. This saves resources on the server and is also saver from a security point of view.

Users and Groups tips from IPConsult

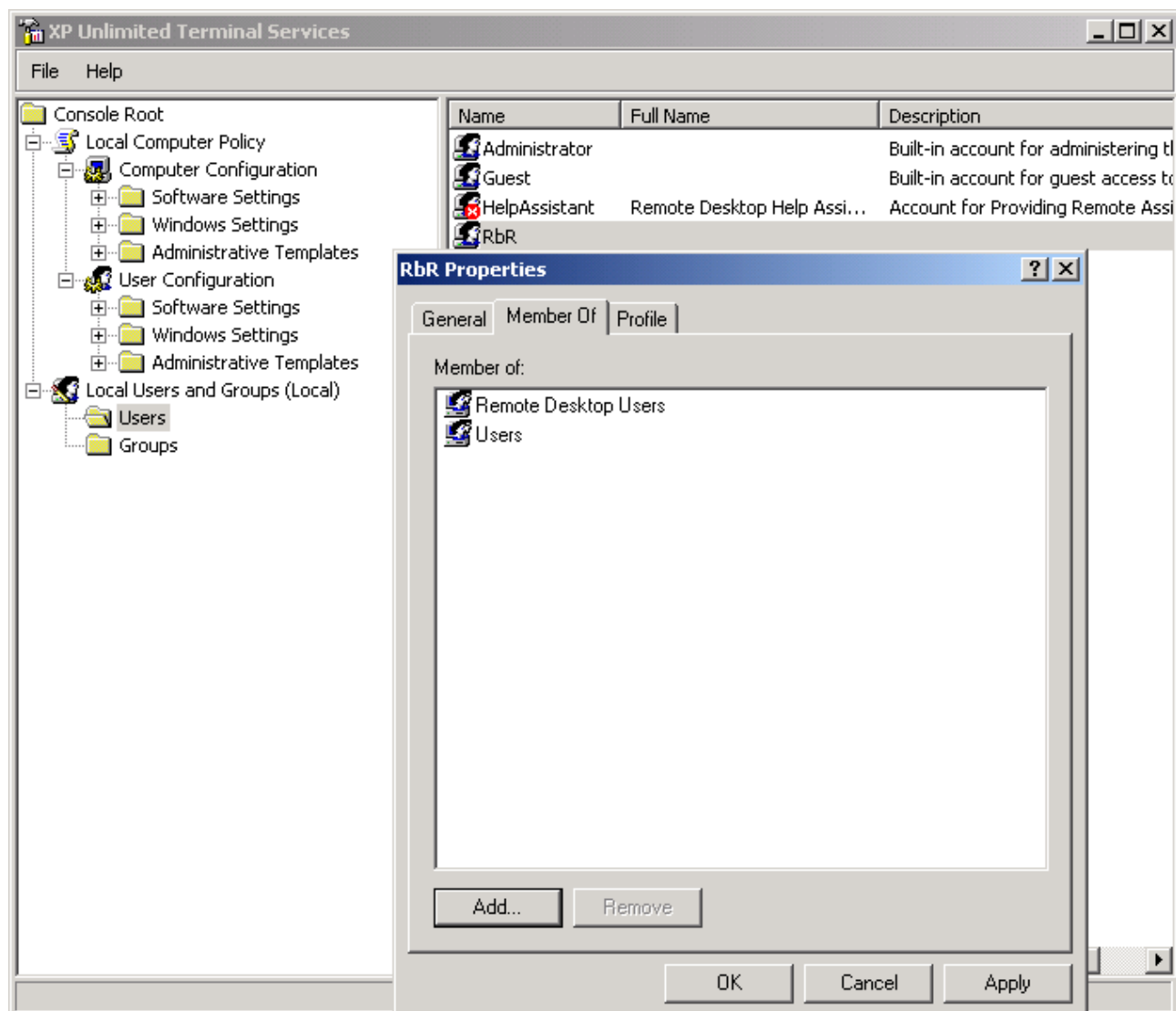
Membership of the group Administrators

From a security point of view not one remote desktop users should be member of the group Administrators. When a remote desktop user is member of the group Administrators, he can change all kind of Terminal Services settings.



Normal users are not a member of Administrators. Only the user Administrator self is member of the group Administrators.

Remote desktop users should have only membership of the group “Normal” users:

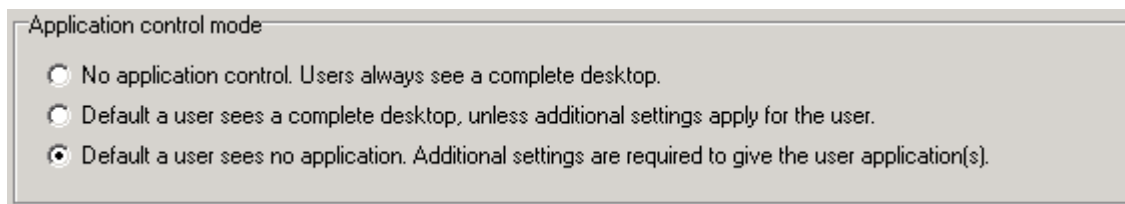


The normal users 'RbR' is member of “Users” and “Remote Desktop Users”.

Application Control

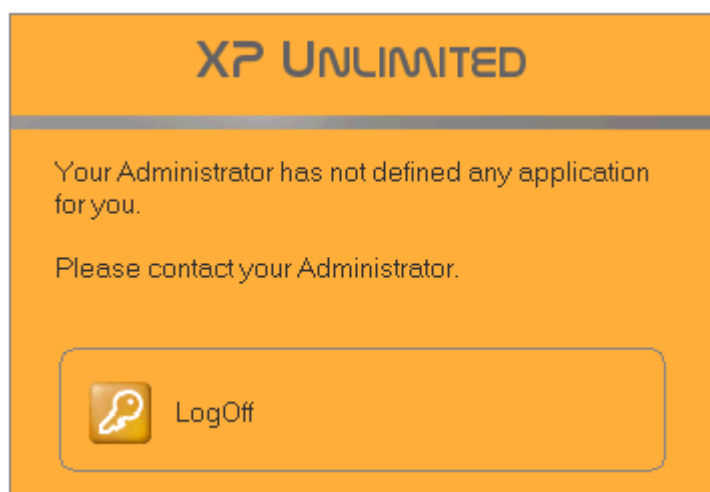
Modes

Application Control has 3 different modes of operation:



The default mode is "No Application Control". Every remote user always sees a complete desktop.

The second and third option turns on the Application Control. The difference between the second and third option is what a user sees in case no applications are available for the user. The second option will give the user a complete desktop without any restriction. The third option will show the remote user a message that the Administrator has not made any application available for the user. The remote user is not able to continue to work:

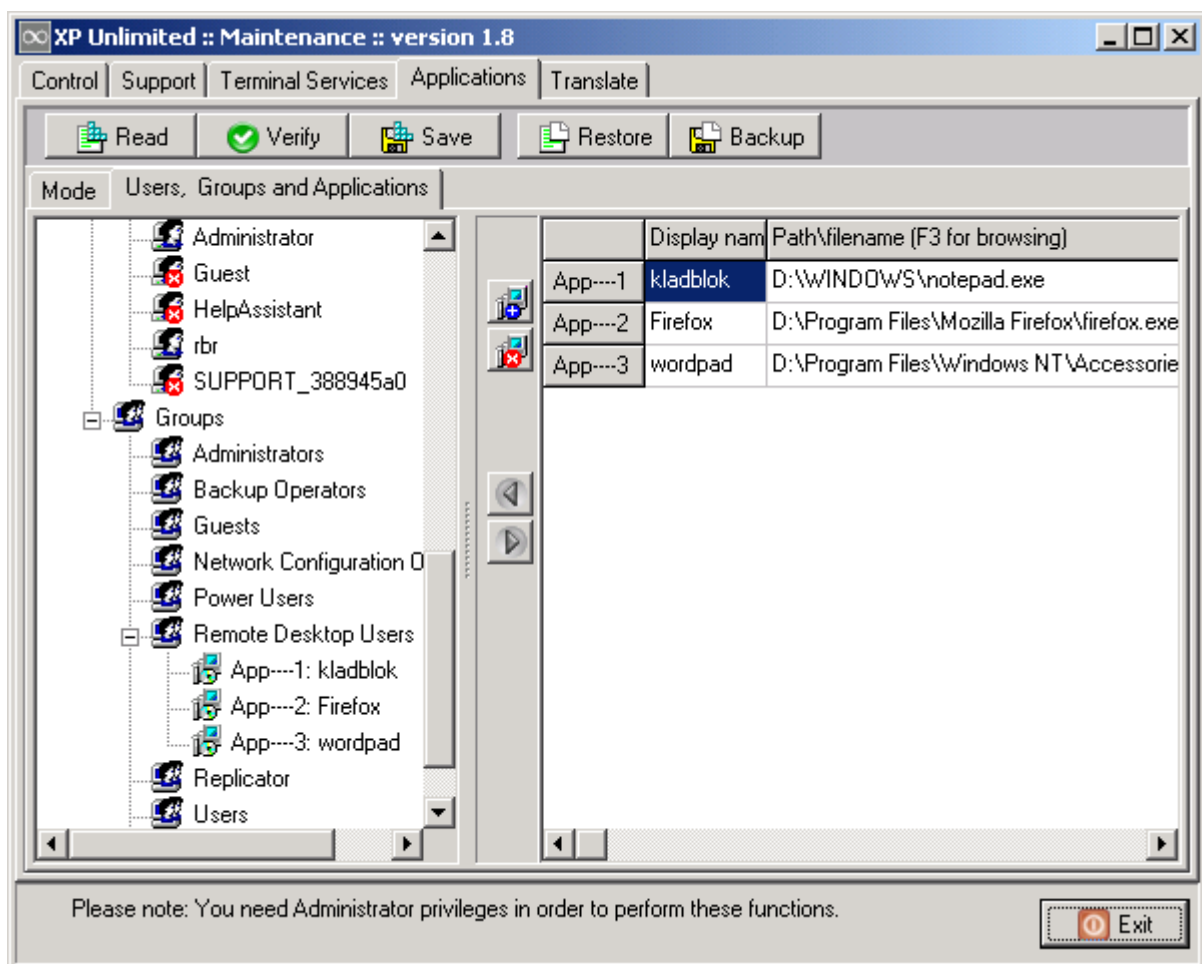


Administrator and Application Control

Application Control does not apply to the user Administrator. It is important that the user Administrator can not be restricted using Application Control, because if he gets restricted, he can not start the Maintenance program any more in order to fix his restrictions.....

Users, Groups and Applications

Example:



The group “Remote Desktop Users” has the applications:

- Notepad
- Mozilla Firefox
- WordPad

Read, Verify and Save

The button bar contains 5 buttons:



- The Read button reads the configuration as it is saved in the Registry. Any recent changes the Administrator has made without using the Save button, will be lost when reading the settings from the registry.
 - You can use the Read button to “reset” any changes you just made which should not have been made.
 - You can use the Read button to “re-read” the users and groups in case you made some changes like defining new users.
- The Verify button checks the consistency of the settings. For example, in case users are deleted, they will be shown with a red cross. In case a File\Pathname of an application does not exist, you will be informed.
- The Save button will save the configuration including all changes the Administrator has made. Please note that, prior to the actual saving, a Verify will be done. In case of inconsistencies like non-existing applications, these inconsistencies will be fixed automatically.
- The Backup button saves the Application Settings in a file.
- The Restore button reads the Application Settings from a file.

Adding Applications

The table with Application behaves like a table in your word processor. Using the TAB-key you can jump through the fields. When you use the TAB-key while the cursor is in the most-right, most-bottom location, a new line for a new Application will be made available.

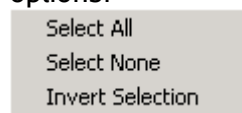
An Application has a name and a Path\Filename. You can use the F3-key or double-click for browsing for executables. The name will be shown in the Startmenu of the remote user.

Do not forget to save the new settings using the Save button.

Selecting Applications

The first column is used for selecting Applications. By clicking on the first column you can (de-) select any Application.

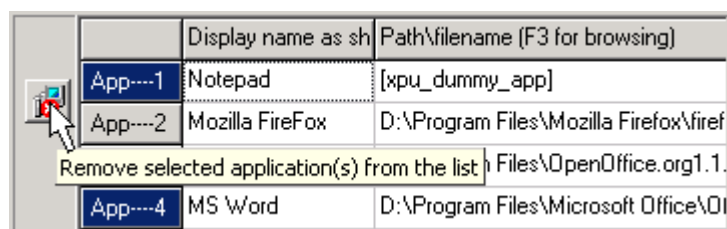
By using the right-mouse on the first column, a small popup menu appears for some smart select options:



Delete Applications

Deleting an Application implies that it will be deleted from the table. It will not be deleted, removed, un-installed, etc, from the server.

Select the Applications that should be deleted using the first column and click on the Delete button. Example:



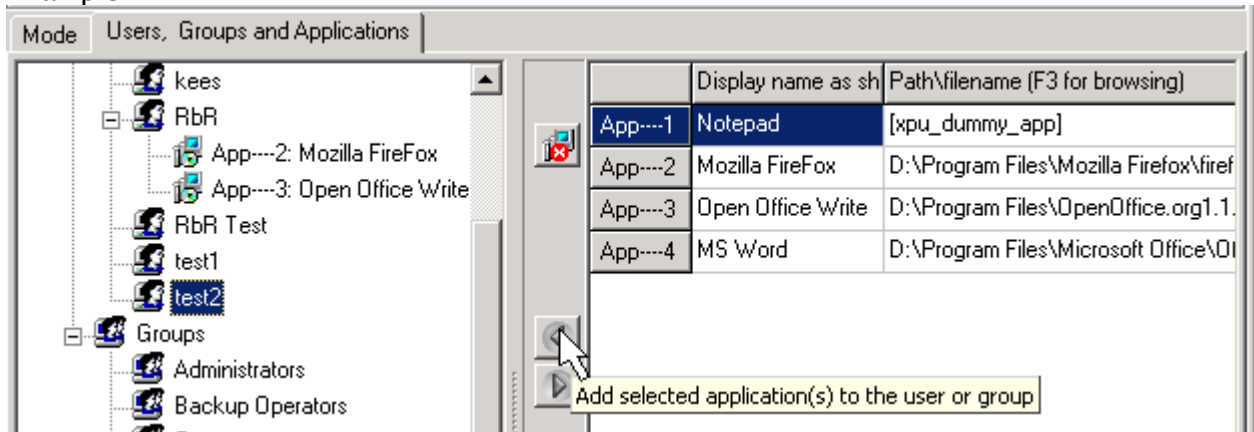
App1 and App4 will be deleted from the table.

Do not forget to save the new settings using the Save button.

Assigning Applications to an user or group

1. Select the Applications
2. Select the user or group
3. Click on the Assign button

Example:

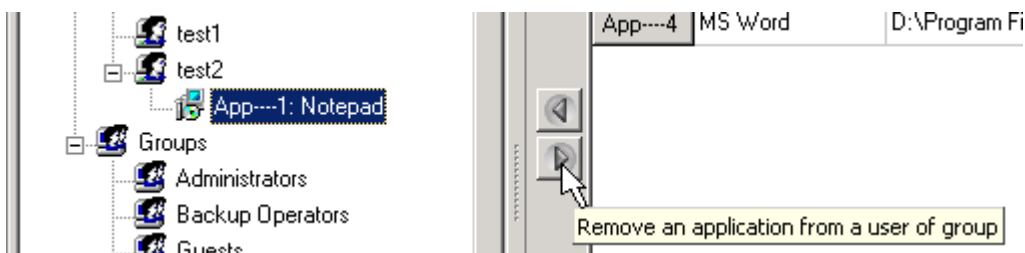


App 1 is selected. User test2 is selected. By clicking on the Assign button, user test2 gets the Application FireFox.

Do not forget to save the new settings using the Save button.

Removing Applications from user or group

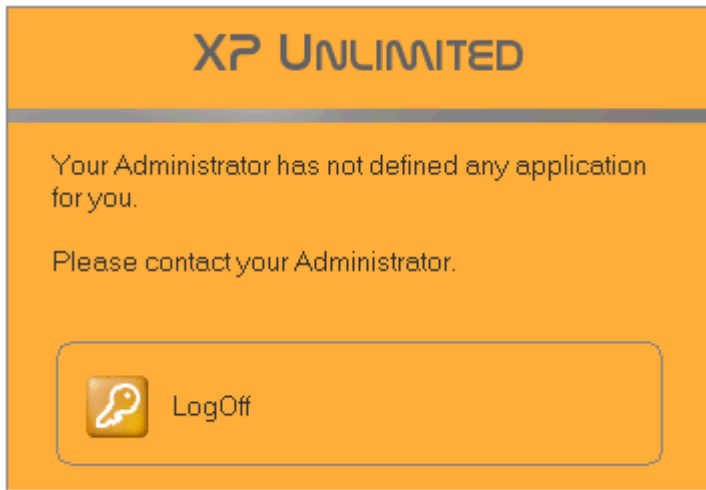
1. Select the Application.
2. Click on the Remove button.



Do not forget to save the new settings using the Save button.

Zero Assigned Applications

In case the third Application mode is chosen, and the remote user has no assigned Applications, the remote user will see the following message:



One Assigned Application

In case a user has 1 (one) assigned Application, this application will be started directly after a login and will be shown full screen. When the user closes the Application, the remote session will be terminated.

Please note that sometimes an Application can not be shown full screen because the Application does not enable or support full screen. The default calculator of Windows is an example of an Application that can not be shown full screen.

See also Hidden Applications. A Hidden Application does not “count”. In case an user has 1 Application and 3 Hidden Applications, this 1 not-hidden Application will be started directly after the login.

Several Assigned Applications

In case an user has 2 or more assigned Applications, a small Startmenu button will be shown in the upper-left corner of the screen.



This Startmenu button gives the user access to the assigned applications:

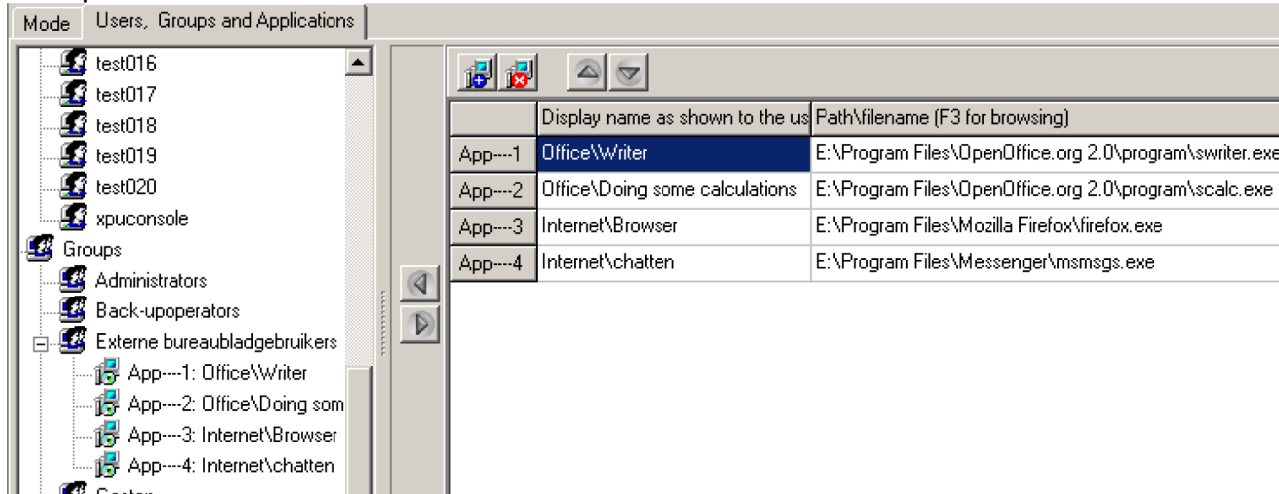


The difference between 1 or more Assigned Applications is the Startmenu button. In case of 1 assigned Application, the Startmenu button will not be shown.

Sub menus

Using a \ in the Display name of an application, the System Administrator can create a sub menu:

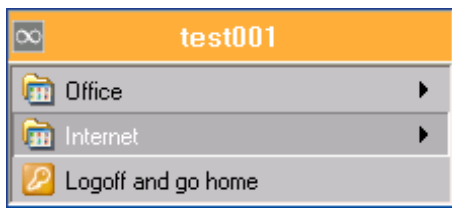
Example:



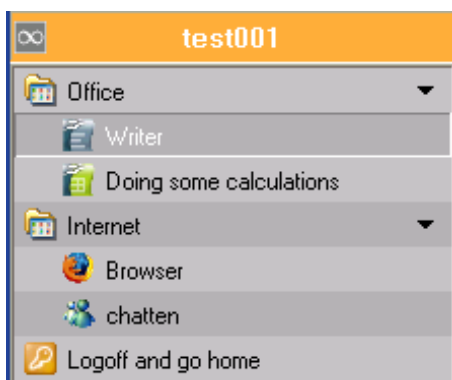
The System Administrator has defined 2 sub menus, called Office and Internet. Both sub menus contains each 2 applications.

The menu items can be sorted using the Up- and Down button above the Applications.

The user experience is as follows: *(next page)*



The user can select the submenus, and the Applications will appear:



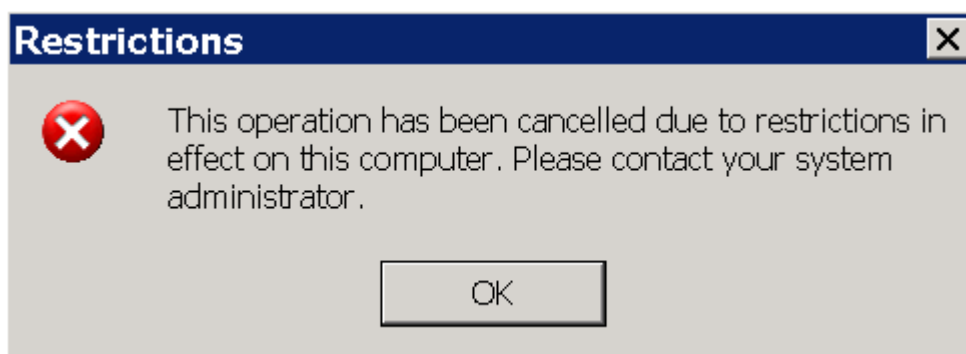
The user experience is slightly different then the default Startmenu as shown by Windows. This way showing the applications has the advantage that all applications are also visible and selectable on small devices like PDAs.

Only 1 level of sub menus

Only 1 level of sub menus is possible. Do not specify 2 slashes in a displayname.

Restrictions

It is not possible for the user to start any application that is not within the list of assigned Applications. In case the user tries to start anything outside the list of assigned Applications, a notification is shown:



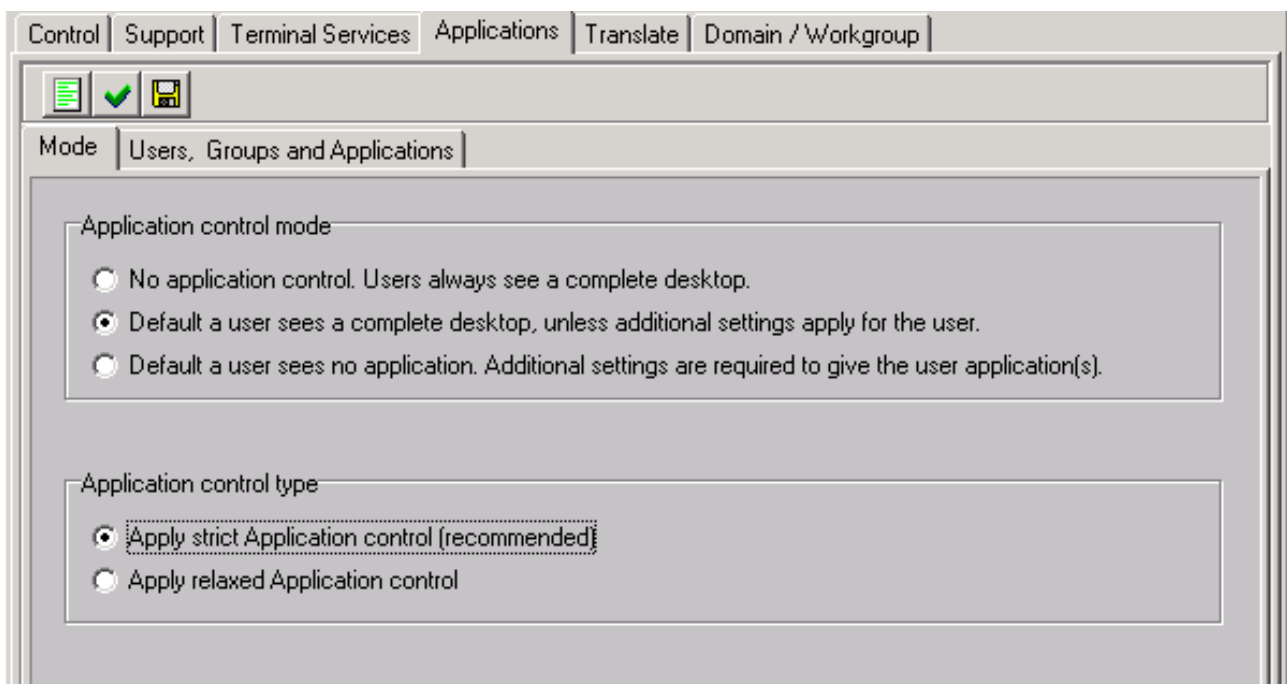
Apply strict or relaxed Application Control

Strict Application Control means that your users can only start those programs you have assigned to them. Sometimes this is too strict. It is possible that an application needs to start all kind of other (sub-)applications. When using strict Application Control, this is not allowed.

From a security and stability point of view is strict Application Control desirable; it prevents that unwanted programs are started by users.

However, if strict Application Control is too strict for your applications, the Administrator can select Relaxed Application Control. This still implies that the user only sees the applications that have been assigned to the user. However, if an application tries to start another (sub-)application, it is allowed.

Sometimes this setting is needed for your applications. Please note that from a security and stability point of view it is not as good as strict Application Control.



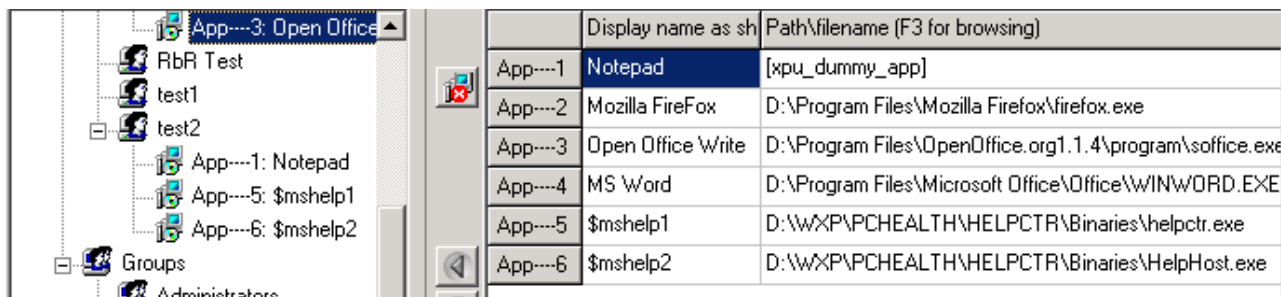
The next paragraph is about Hidden Applications. By using Hidden Applications, you might be able to avoid the use of relaxed Application Control.

Hidden Applications

Sometimes an Application starts another Applications. These sub-applications should not appear in the Startmenu of the user, but the user should be allowed to run these sub-applications.

Any Application with a name that starts with a \$ (dollar sign) is a so called Hidden Application.

Example:

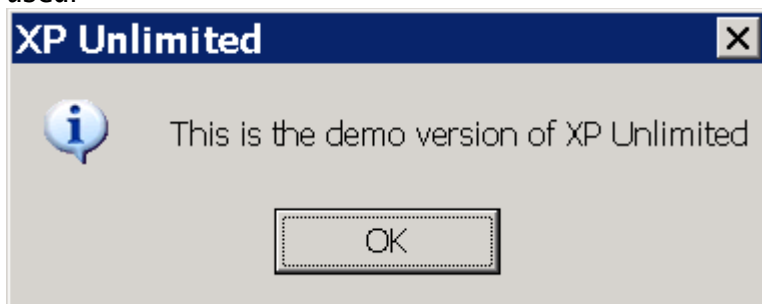


User test2 is allowed to start the default Help-programs of Windows. Those help programs can be started by Notepad or by pressing F1.

Hidden implies that the user can run the Application, but it is not shown in the Startmenu of the remote user.

Nag screen

The demo version of XP unlimited shows a nag screen after a login, in case Application Control is used:



This nag screen is not shown when using the full, unlimited version of XP Unlimited.

Command line parameters

An Application can have zero, 1 or more command line parameters:

	Display nam	Path\filename (F3 for browsing)	Commandline (optional)	Startup
App---1	myApp	E:\Program Files\xpUnlimited\xpuTestToolShowCommandLineParams.exe	param1 param2 "this is param 3"	
App---2	notepad	E:\windows\system32\notepad.exe		
App---3	FireFox	E:\Program Files\Mozilla Firefox\firefox.exe	http://www.xpunlimited.nl	
App---4	Write	E:\Program Files\Windows NT\Bureau-accessoires\wordpad.exe		
App---5	cmdfile	E:\Program Files\xpUnlimited\startapp.cmd		
App---6	This Is Me	E:\Program Files\xpUnlimited\xpuTestToolThisIsMe.exe		

Usually the character “space” is used to separate the parameters. You can use double quotes in case a space is needed within a parameter.

Environment variables and Command line Parameters

If you open a classic Dos-box, you can type the command “set”. It will show you the available “Environment variables”. Most of the environment variables are always available on every windows-system. Sometimes there are a couple of extra environment variables that are only available on *your* windows-system, because they are the result of some kind of application you installed.

Example of environment variables that are always available:

```

C:\ E:\WINDOWS\system32\cmd.exe
Microsoft Windows XP [versie 5.1.2600]
(C) Copyright 1985-2001 Microsoft Corp.

E:\Documents and Settings\rbr>set
ALLUSERSPROFILE=E:\Documents and Settings\All Users
APPDATA=E:\Documents and Settings\rbr\Application Data
CommonProgramFiles=E:\Program Files\Common Files
COMPUTERNAME=TESTXP
ComSpec=E:\WINDOWS\system32\cmd.exe
FP_NO_HOST_CHECK=NO
HOMEDRIVE=E:
HOMEPATH=\Documents and Settings\rbr
LOGONSERVER=\\TESTXP
NUMBER_OF_PROCESSORS=1
OS=Windows_NT
Path=E:\WINDOWS\system32;E:\WINDOWS;E:\WINDOWS\System32\Wbem
PATHEXT=.COM;.EXE;.BAT;.CMD;.VBS;.VBE;.JS;.JSE;.WSF;.WSH
PROCESSOR_ARCHITECTURE=x86
PROCESSOR_IDENTIFIER=x86 Family 6 Model 8 Stepping 0, AuthenticAMD
PROCESSOR_LEVEL=6
PROCESSOR_REVISION=0800
ProgramFiles=E:\Program Files
PROMPT=$P$G
SESSIONNAME=Console
SystemDrive=E:
SystemRoot=E:\WINDOWS
TEMP=E:\DOCUMENTS~1\rbr\LOCALS~1\Temp
TMP=E:\DOCUMENTS~1\rbr\LOCALS~1\Temp
USERDOMAIN=TESTXP
USERNAME=rbr
USERPROFILE=E:\Documents and Settings\rbr
windir=E:\WINDOWS

E:\Documents and Settings\rbr>_
  
```

Examples how to use Environment variables

You can use those environment variables in the command line parameters. Examples:

<i>Command line parameter in Application Control</i>	<i>Result for user rbr</i>
E:\documents\%username%	E:\documents\rbr
%userprofile%\some folder	E:\Documents and Settings\rbr\some folder

Environment variables and Command line Parameters, Escape character &

Within a command line parameter you can use the & character for special character in the range \$01 .. \$FF (hexadecimal between 1 and 255).

The & character is used as a so called escape character. Examples:

<i>Command line parameter in Application Control</i>	<i>Result for user rbr</i>
E:\documents\&25username&25	E:\documents\%username%
E:\documents\&26username&26	E:\documents\&username&
E:\documents\&22username&22 %username%	E:\documents\"username" rbr
"E:\documents\username" %username%	"E:\documents\username" rbr

Take a good look at the last 2 examples: the first occurrence of username is not considered to be an environment variable because it is not enclosed in %. In the third example it is enclosed in &22. This is the hex-value of the character ", so result will be "username".

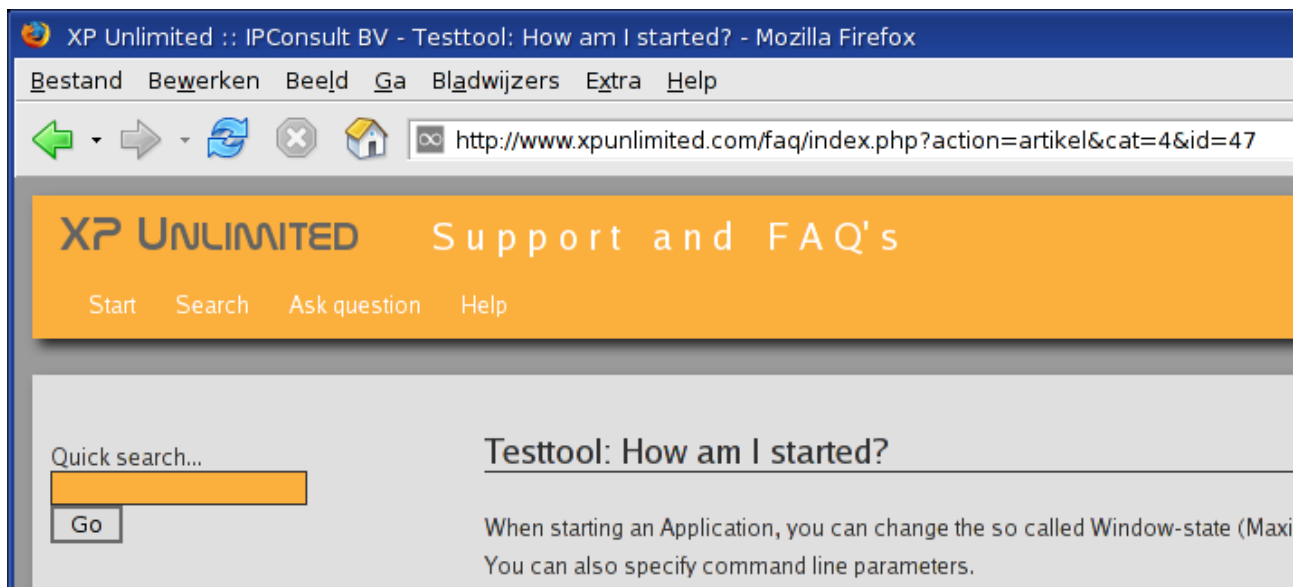
The second occurrence of username is considered as an environment variable because it is enclosed in %. Therefore it is replaced with rbr.

The &XX appearance in a command line parameter will always be translated to a character:

<i>Command line parameter in Application Control</i>	<i>Result for user rbr</i>
E:\documents\&25username&25	E:\documents\%username%
"E:\documents\&25username&25"	"E:\documents\%username%"
"E:\documents\&26username"	"E:\documents\&username"

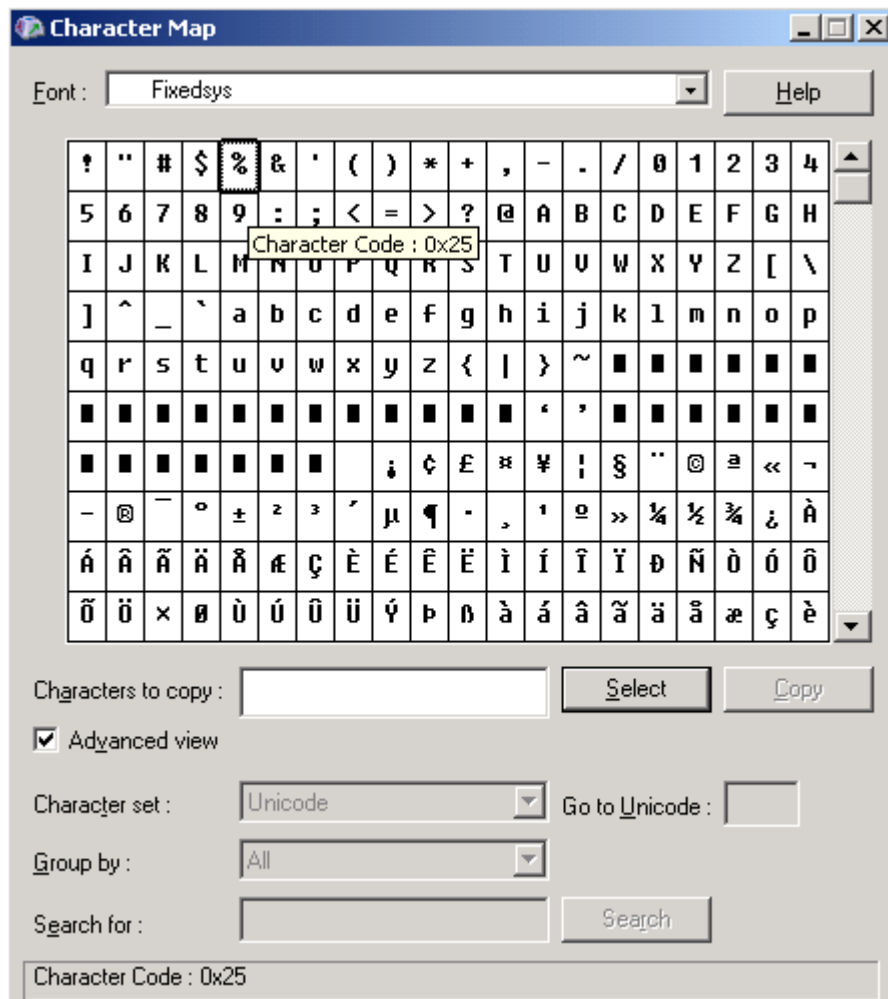
Test tool “How Am I Started”

From our website you can download a free testtool called “How Am I Started. It can assist you in testing and understanding of command line parameters and environment variables:







Windows Character Map

You can use the default available “character map tool” for obtaining the hex-value of characters:



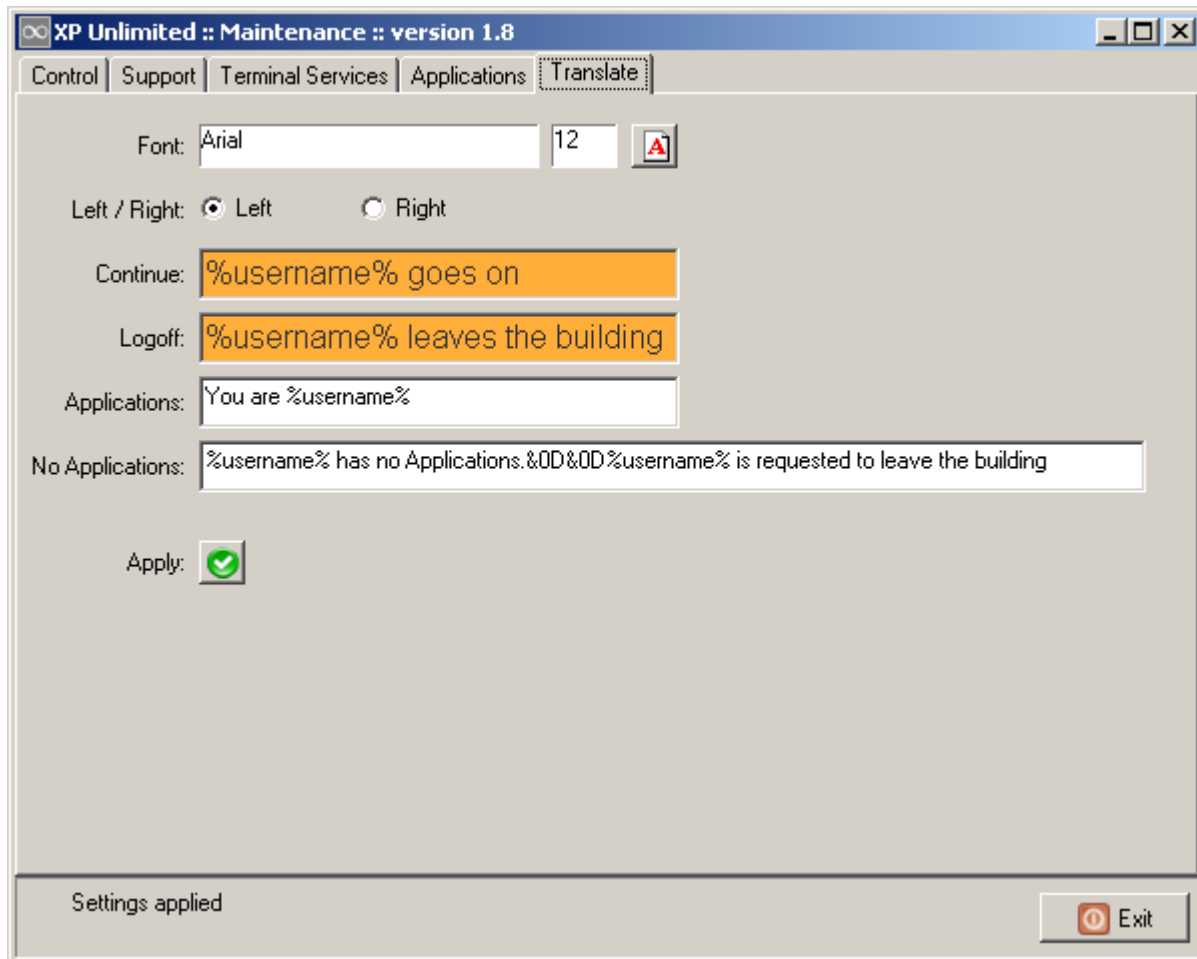
Startup Options

An Application can be started as follows:

- | | | |
|---|-----------------|--|
|  | Autorun | The Application will be started directly after the login of the user. Multiple Applications can be flagged as Autorun (as many as you want....) |
|  | Maximize | When started, the Application will be initially shown Maximized. The user is able to Restore or Minimize the Application. |
|  | Minimize | When started, the Application will be initially shown Minimized. The user is able to Restore or Minimize the Application. |
|  | Visible | <p>Default all Applications are shown Visible. An Application can be flagged as “not shown Visible” aka “Hidden”. An user can not interact with a Hidden Application.</p> <p>This option is useful voor starting CMD-files which will start another Application.</p> <p>In combination with Autorun, you can start some kind of Hidden Service application for the user, without showing it. For instance, you might use it to start some Anti Virus client software without showing it to the user.</p> |

Translate user Dialogs

The tabpage Translate gives the Administrator the option to translate or customize those dialogs that will be shown to the user:

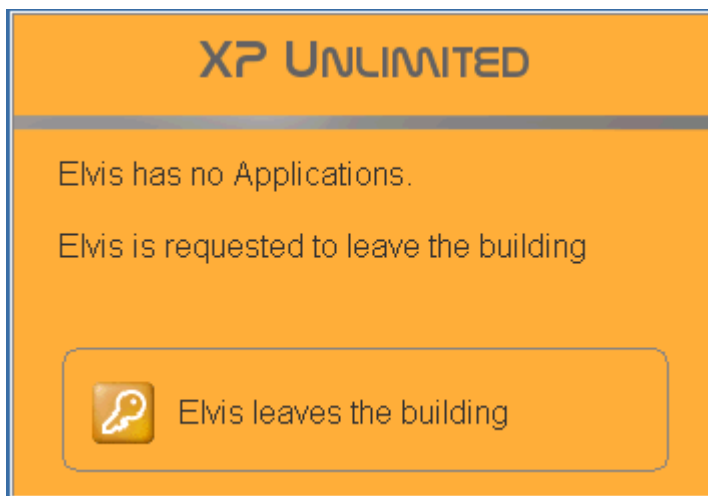


These settings apply to the following dialogs: (see next page)

Please note that you can use the same environment variables and escape character as explained in the paragraph about command line parameters.

The Administrator is free to enter any text. However, make sure that your users understand the text, and make sure it fits in the dialogs. If the Administrator enters too much text, the text will be truncated and cut off.

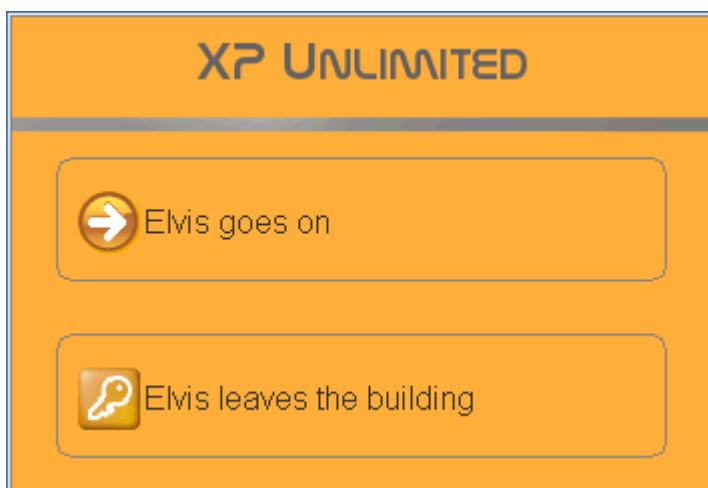
No Applications defined for a user Elvis



Startmenu



Continue or LogOff:



Test Tools

For the IT professional or for those involved in testing XP Unlimited, we have some Test Tools. You can download the Test Tools from our website.

The Test Tools can assist you in understanding and working with Application Control, the Command line Parameters and the Autorun options of an Application.

Changelog

Version 1.8.13.3	<p>Improvements</p> <ul style="list-style-type: none"> The Application Control Menu is improved. The System Administrator can define 1 or more submenus. <p>Bugfix</p> <ul style="list-style-type: none"> Depending on language versions of WXP after a few days or weeks uptime, the server can run out of resources. This is fixed.
Version 1.8.12.1 1 December 2006	<p>Improvements</p> <ul style="list-style-type: none"> Sometimes “bad” behaving applications do have the impact that users are disconnected, while attempting to login. We have improved XP Unlimited in order to deal with these “bad” behaving applications. An example of a “bad” behaving application is described in this FAQ: http://www.xpunlimited.com/faq/index.php?action=artikel&cat=2&id=34 Sometimes the user has to wait. In such cases a progressbar is shown, so it is clear that the user has to wait.
Version 1.8.10.1 1 October 2006	<p>Improvements</p> <ul style="list-style-type: none"> The Setup program can use a HTTP-proxy for validation of the license key. The menu with applications is initially completely shown (in case no AutoRun applications are used) Some improvements back ported from the Enterprise version. The Setup program shows a warning in case Domain Settings are noticed; you should use the Enterprise version. Improvement in Application Control. Sometimes the session did not logoff when the user did choose logoff. Virusscanners or Personal Firewalls remain active and prevent the session from terminating. A new, more stronger function is used for logoff. Showing the word "busy..." in the Setup-program, when installing might take a few seconds. More info in the ZIP-Support-File, because customers never ceases to amaze us what that do with the software....
Version 1.8.8.7 7 August 2006	<p>Improvement:</p> <ul style="list-style-type: none"> Implement a setting for relaxed application control. <p>Bug fix:</p> <ul style="list-style-type: none"> Before starting an application, the correct environment was not set. Due to this, sometimes applications did not start.
Version 1.8.7.14 14 July 2006	<p>Minor bug fix:</p> <ul style="list-style-type: none"> Non US versions of XP have different names for the user Administrator and group Administrators. XP Unlimited can handle this correctly.

Version 1.8 11 July 2006	<p>Some extra functions in our Application Control Module:</p> <ul style="list-style-type: none"> • Command line parameters can contain environment variables. Example: %username% %windir% • User dialogs can be translated in a local language. The Maintenance tool has an extra Settings-page where the Administrator can enter the translation. The translation is limited to the dialogs an user sees, assuming that the Administrator is able to work with English language in the manual, dialogs and FAQs. <p>Some fixes:</p> <ul style="list-style-type: none"> • The Setup program is updated. • The Un-install is fixed; sometimes not all registry keys were deleted while un-installing.
Version 1.7.6.19	<p>Some improvements in our Application Control Module:</p> <ul style="list-style-type: none"> • Applications can be started with command line parameters. • Applications can be started Maximized, Minimized or Hidden. • Applications can be flagged as Autorun. They will be started upon login of an user.
Version 1.7.6.1 1 June 2006	<ul style="list-style-type: none"> • The option for disconnect is back again. We did remove it because of feedback from customers requesting to remove it. However, the amount of feedback from customers that want to use the disconnect-functionality was larger. We have a FAQ which describes how you can disable the disconnect-functionality of the XP Unlimited server. • New core modules. These core modules are needed for Domain Authorization. The option for Domain Authorization itself is not available yet because we have not yet completely figured out how to combine Domain Authorization with our Application Control. • Default logon screen on the console is now the classic logon screen. We had various reports that the fast-user-logon screen becomes very slow with 50 or more users. • Small improvement in the Setup Program: in case files or folders are marked as ReadOnly or Hidden, our Setup Program is still able to find the files.
Version 1.6.4.17 17 May 2006	<p><u>Minor improvements</u></p> <ul style="list-style-type: none"> • Application Control does not apply to the user Administrator. It is important that the user Administrator can not be restricted using Application Control, because if he gets restricted, he can not start the Maintenance program any more in order to fix his restrictions..... • Improvement in the un-install program. Sometimes not all Registry keys were deleted.
Version 1.6 1 May 2006	<p><u>Application support like Citrix</u></p> <p>With Application Control, XP Unlimited can give a user or a group one or more applications. The user does not have a desktop, a startmenu, etc. Application Control comes with security. The remote user is not allowed to run any other applications.</p>

Version 1.5.4.10 10 april 2006	<p>The core modules of XP Unlimited are not changed. Only the Setup-program and the Maintenance-program are improved. If the previous version works for you, there is no need to upgrade.</p> <ul style="list-style-type: none"> • The Administrator can change the portnumber on which the XP Unlimited server listens for remote sessions. Default value is 3389. Any other value which is not already in use by WXP, can be chosen. • The logfile is moved from the %TMP% folder to the %WINDOWS%\TEMP folder. This one is not as variable as the %TMP% folder, so valuable logging information will not be lost due to different %TMP%-folders. • The various XP Unlimited programs can cooperate with screens using 120 dpi or large font settings (without hiding text or buttons). • Fixed a bug which prevented to show the license terms. • Removed the option for disconnect. There are some problems related to disconnected sessions. For now it is better to logoff.
Version 1.5 27 mar 2006	<p>The core modules of XP Unlimited are not changed. Only the Setup-program and the Maintenance-program are improved. If version 1.4 works for you, there is no need to upgrade.</p> <ul style="list-style-type: none"> • Better Support. More information is put in the ZIP-file. • The user Administrator is available on the login-screen on the Console. • Removed the download-latest-code function in the Setup-program and replaced it by a Check-for-Update button. Hopefully everybody will use this Check-for-Update button because old versions of XP Unlimited seem to wander around the Internet. • Added extra functionality in the Maintenance-program.
Version 1.4 27 feb 2006	<ul style="list-style-type: none"> • Better support. A ZIP-button is placed in the application. Using this 1 button, a ZIP-file is created on the desktop containing all information needed for IPConsult to give support. • XP Unlimited should now also work with versions of Windows XP Professional with special localized versions of system files.
Version 1.3 20 feb 2006	<ul style="list-style-type: none"> • Cooperation with the TCP/IP update from Microsoft on 15-17 Februari 2006. • When un-installing XP Unlimited, added a notification that users should be removed from the group "Remote Desktop Users" and that TCP Port 3389 should be closed. • Extra functions in the maintenance program. • Some artwork on the gui of the maintenance program. • Fix for this FAQ. • Version number in Window-title and in logfile. Make it easier to identify the version of the software.
Version 1.2 11 feb 2006	<p>Added an entry in the Startgroup of the Startmenu of the installing user. This entry contains an the url "http://www.xpunlimited.com/version_1_2.html" Reason of doing this is that the demo gets more downloaded then our manual. See chapter "Additional steps for using XP Unlimited" why it is important to read the manual after the installation.</p>
Version 1.1 08 feb 2006	<p>First production version</p>

Version 1.0 Nov 2005	Used only by selected beta-customers
-------------------------	--------------------------------------

All contents copyrighted by IPConsult BV

IPConsult BV
Tiel, The Netherlands
3 January 2006